



SWIFT

CREATING SMILES FOR LIFE

Love
Elegance



Love life

LOVE SWIFT

UNDER OUR OWN BLUE SKY

Take me to a place that I call Here,
Hold me in a time that I call This
The air is clean, the light is clear
And now an outdoor kind of bliss
Draws me to a spot I really love;
The door wide open, the kettle on,
A family that fits me like a glove.

A moment's pause for those who've gone
Who still remain in the mind and heart.

And now, under our very own blue sky
The rest of our lives can slowly start
And our spirits can begin to fly
With memories of where we've been,
Those mornings we have yet to know
Those brand new vistas all unseen.
Love life, I say. And now, let's go!

©Ian McMillan 2021

love life
LOVE SWIFT

Contents

PG05 LOVE ELEGANCE - BEAUTIFULLY LUXURIOUS TOURING

PG07 HIGHLIGHTS

PG12 EXTERIOR STYLE

PG14 SMART CONSTRUCTION

PG16 FEATURES

PG18 FABRIC OPTIONS

PG20 TECHNICAL SPECIFICATION

PG22 WHERE TO BUY YOUR ELEGANCE





Love Family

Love Elegance

Beautifully Luxurious



ELEGANCE

8'0" WIDE


FROM
£37,795

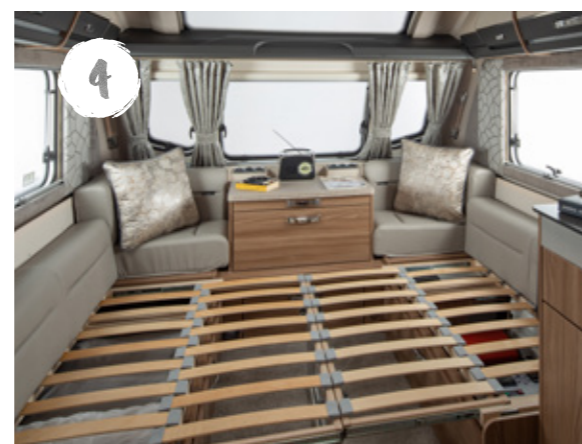
For 2022, Elegance is exclusively available in three 8ft-wide models, all featuring an array of premium upgrades from underfloor heating to the option of an E&P levelling system. Now more refined and superbly equipped than ever, the range is also constructed with SMART technology.



Highlights

Indulgence and luxury continue to be Elegance's watchwords for 2022, starting outside with contemporary new graphics and a full GRP bodyshell. Inside, an exquisite new upholstery scheme fuses comfort, functionality and sophistication, alongside an array of premium enhancements.

- 1 Glamorous new Brisa Ultraleather® soft furnishing scheme
- 2 Front chest with soft-close drawer, concealed drawer inside and slide-out extending top
- 3 **NEW** Alde underfloor heating throughout plus radiator central heating and water heating 
- 4 Easy Accuride bed make up system on front beds with beech slat seat and bed bases
- 5 Panoramic front sunroof with surround incorporating recessed lights and speakers
- 6 **NEW** Alde constant water and 30 litre internal fresh water tank





1

Slate Weft kitchen worktop with foldaway extension and underslung stainless steel sink

2

NEW ventilated Dometic flatbed microwave oven with digital controls and **NEW** kitchen extractor hood

3

Thetford thermostatic oven and grill with 3-burner gas hob, electric hot plate and **NEW** cast iron frets

4

Tall slimline dual-hinged Dometic (Series 10) 177 litre fridge with removable freezer compartment

5

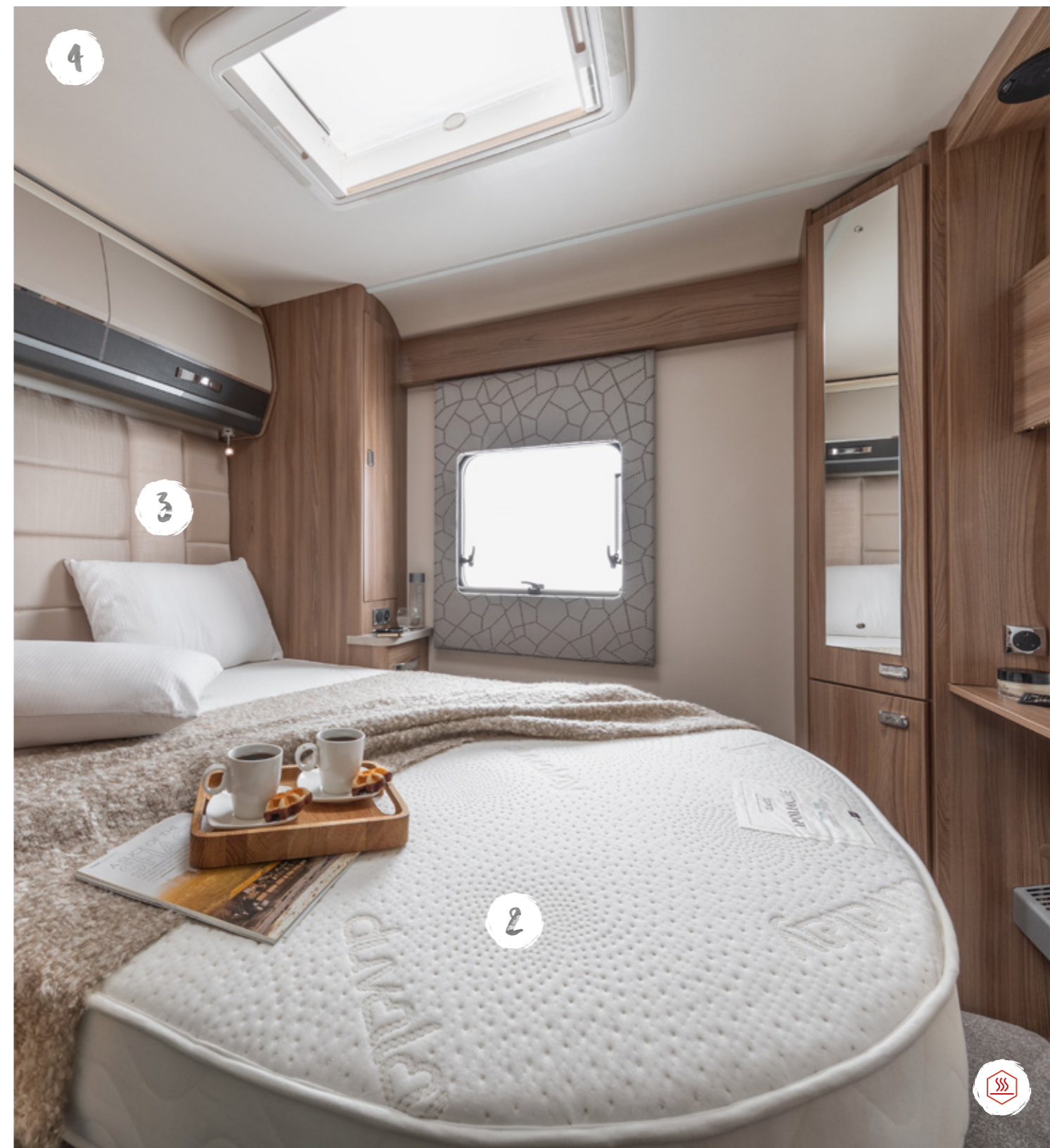
Control and monitor onboard systems with the 7" LCD Swift Command touchscreen panel

6

Soft-close kitchen drawers and doors plus under-counter feature LED strip lighting



1



4

3

2

1

Dedicated washroom with illuminated shower console and **NEW** omnivent fan

4

NEW electric Midi-Heki rooflight with flyscreen and adjustable concertina blind

2

Exclusive Duvalay Duvalite Apollo Luxe mattress with Freshtec for a great night's sleep

5

NEW adjustable and dimmable under-locker spotlights with USB points

3

Sumptuous full-height, deep padded headboard to fixed beds

6

Ecocamel Jetstorm showerhead for a powerful shower that uses less water



5



6

Love
Style



1



2



3



4

Elegance

5



6

8

7

1

Streamline aerodynamic profile with stylish exterior graphics and 3D automotive style badge

2

AL-KO stabiliser and shock absorbers for a safer, smoother towing experience

3

Hail-resistant exterior GRP roof with **NEW** 100W roof-mounted solar panel

4

Ample LED exterior lighting, including high-level marker for better visibility and **NEW** offside awning light

5

Panoramic sunroof and triple flush fitting front window design

6

Fully moulded, sweeping front GRP panel

7

Extra wide access gas locker door, plus BBQ point and 230V external mains point

8

NEW Truma mains waterline for connection to tap plus cold water shower point with showerhead

SMART CONSTRUCTION



SMART is the basis of our intelligent construction system, used across our entire touring caravan range. Strong, Modern, Aerodynamic, Resilient and Tested, you can be assured your Swift caravan is a high quality engineered product.



STRONG

The Strong timberless body frame uses PURE, a tough, hard polyurethane based product that is totally impervious to water and has been proven through use.



MODERN

The SMART construction system uses Modern materials, and has been developed to ensure the exterior profiles maintain the Modern, desirable looks our caravans are renowned for.



AERODYNAMIC

We continue to lead the way in Aerodynamics, using Computational Fluid Dynamics to help shape the bodyshell for better fuel consumption and safer towing.



RESILIENT

All fixings are made into the PURE material to a pre-defined depth. PURE is totally impervious to water and has no veins. This means there is no passage for water from the outer skin, making the caravan highly Resilient against moisture.



TESTED

Extensive safety Testing at the Millbrook track, plus cold chamber Testing down to minus 15°C and beyond, puts prototypes through conditions most products will never have to experience in a lifetime; all part of the Swift ethos to deliver the best products to you.



HAIL RESISTANT GRP ROOF

Woven GRP outer surface provides greater durability from the elements.



GRP SIDEWALLS

Balanced panel side walls with GRP outer and inner skins. GRP is more impact resistant than aluminium and can be easily repaired, ensuring long lasting good looks and helping protect your investment for the future.



'SMART' GRP sidewall during the production process.



FLOOR CONSTRUCTION

'Sandwich' floor construction with ply upper, high rigidity Styrofoam core and GRP outer skin to provide greater durability from the elements.



FEATURES

EXTERIOR

- European Whole Vehicle Type Approval ensures compliance with strict weight, dimension and safety regulations
- AL-KO galvanised steel chassis with Euro-axle
- EN1645 Grade 3 classification for heating and thermal insulation confirmed by cold chamber testing
- SMART construction with GRP body panels:
 - Strong, moisture proof 'PURE' polyurethane timber-less framed bodyshell with polystyrene insulation core (25mm in sidewalls, 32mm in roof)
 - Robust balanced panel side walls with GRP outer and inner skin
 - 44mm 'sandwich' floor construction with GRP outer skin, ply upper and high rigidity Ravatherm core
 - Hail resistant exterior GRP roof, fully bonded for extra strength and flatness
 - Sweeping front panel in GRP with triple flush fitting opening windows and exclusive LED front marker lights
 - Sweeping front panel in GRP with completely sleek, triple flush fitting with extra wide opening window design and LED front marker lights
- Full height GRP rear panel
- Streamlined aerodynamic profile
- Stylish exterior graphics scheme
- Exclusive LED rear light clusters, LED high level marker and brake light which provide better visibility in poor weather
- LED side marker running lights
- LED awning light with key fob control
- **NEW** offside LED awning light
- Surface mounted impact resistant skirt system
- Edge alloy wheels
- Steel spare wheel on underslung carrier
- High tyre rating - a load margin is included in the tyre specifications
- High quality jockey wheel
- 13-pin Jaeger 12V car connector
- AL-KO Euro overrun device with two-way assisted handbrake
- AL-KO side-mounted jacking point and jack
- AL-KO carabiner breakaway cable
- Shock absorbers for a smoother towing experience
- Step-on hitch cover for easy cleaning of front windows
- Heavy duty corner steadies
- **NEW** rain guards
- Chrome effect two part grab handles to front and rear
- **NEW** 100W roof mounted solar panel
- 230V mains socket
- **NEW** Truma mains waterline for connection to tap
- Truma cold water shower point with showerhead
- Aerial point in battery box for portable satellite dish connection
- BBQ point and connector
- **NEW** winter fridge vent covers
- Exterior access battery box with mains electric inlet (battery not included)
- **NEW** motor mover provision in battery box
- External service doors (access under nearside front bed and fixed beds)
- Extra wide access carbon effect gas locker door with single lever three point locking
- **NEW** Truma Duo comfort crash sensor change over regulator and hoses suitable for use with either propane or butane bottles
- Fully double-glazed opening windows
- Screen printed windows with graphite grey tint
- Semi-recessed body colour awning rail on both sides
- Fixing bars for optional Thule rear mounted cycle rack
- Wide domestic-style flush fitting one piece exterior door with magnetic stay, interior moulded liner, window with blind and bin
- Entrance step

LIVING, RELAXING & SLEEPING

- 1.95m (6'5") headroom
- **NEW** Ultraleather® Brisa soft furnishing scheme
- Aralie Sen woodgrain furniture with contemporary colouring and Oyster Grey upper locker doors with stylish colour inlay
- French Oak effect, high impact, scratch resistant floor lino
- Larger retained embroidered entrance mat
- Panoramic front sunroof with surround incorporating recessed lights and speakers
- Luxury full width curtains to front windows complemented by fabric covered surrounds to side windows
- Twin curtain track for improved hanging and ease of use
- Sectioned removable carpets for flexibility
- Two large scatter cushions and two bolsters
- Contoured cushioning for improved comfort, wrapped in Ultra-Leather Brisa's high performance fabric, meticulously designed with ultimate softness and durability
- Seat and backrest ventilation boards
- Easy Accuride bed make up system on front beds with beech slat seat and bed bases with fully opening hinged tops for extra comfort and easy access
- Exclusive Duvalay Duvalite Apollo Lux mattress containing Freshtec - a market leading high spec foam offering maximum airflow for a cool, comfortable good night's sleep (fixed beds only)
- Fixed beds with aluminium bed frames to maximise strength and storage space (model specific)
- Sumptuous full height, deep padded headboard to fixed beds
- Premium quality speakers in bedroom (model specific)
- Midi-Heki rooflight with flyscreen and adjustable concertina blind in lounge
- **NEW** electric Midi-Heki rooflight with flyscreen and adjustable concertina blind in bedroom
- Door flyscreen with easy concertina action
- Pleated blinds and flyscreens to all windows

COOKING & EATING

- Thetford thermostatic oven and grill with **NEW** oven light, plus three-burner gas hob and one electric hot plate, all with electronic ignition. Hob features **NEW** cast iron frets and a glass lid with auto gas shut-off functionality
- **NEW** ventilated Dometic flatbed microwave oven with digital controls
- Tall slimline dual hinged Dometic (Series 10) 177 litre electronic ignition fridge incorporating 12 litre removable freezer compartment
- **NEW** kitchen extractor hood
- Omnivent three speed, two way roof fan in kitchen area
- **NEW** Oyster Grey upper locker doors to kitchen area
- Domestic style kitchen with soft close drawers and doors with positive catches for secure storage
- Slate Weft laminate kitchen worktop with underslung stainless steel sink
- Foldaway kitchen worktop extension
- Removable drainer and food grade nylon chopping board nestle together for easy storage in dedicated location
- Kitchen acrylic splashback
- Chrome effect swivel spout kitchen tap
- Two pull-out wire baskets in kitchen cupboard
- Cutlery drawers on smooth-action steel runners (model specific)
- Chrome finish crockery rack
- Large freestanding table, suitable for full-size place settings
- Feature LED strip lighting under kitchen worktop

WASHING

- Dedicated washroom incorporating 'illuminated' shower console and durable shower tray
- Shower bi-fold door retained on track for improved access (845)
- One piece 'Vellamo' shower cubicle with curved sliding door (835 & 850)
- Ecocamel Jetstorm shower head with on/off button for a powerful shower that uses less water

- Chrome effect swivel spout vanity tap
- Dedicated storage shelf in shower area of rear washroom (model specific)
- Thetford toilet with electric flush and 18 litre wheeled waste tank
- **NEW** omnivent in washroom (except 845)
- **NEW** shaving socket
- Illuminated washroom mirror
- Folding washroom ceiling mounted garment hanging rail (model specific)
- 32mm thick washroom doors with domestic style locks and handles
- Decorative inlay to washroom door (model specific)

STORAGE

- Useful front chest featuring a soft close drawer with concealed drawer inside and convenient slide-out extending top
- Overhead locker doors with injection moulded spaceframe construction
- Positive overhead locker catches for secure storage on the move with chrome handles
- Upper front corner opening lockers for extra storage
- Soft close drawers and upper lockers throughout for smooth operation
- Lightweight, strong composite furniture construction

HEATING & UTILITIES

- Exclusive Swift Command control system with large 7" LCD colour touchscreen panel with improved user interface and functionality featuring;
 - o Integrated DAB and FM radio tuning and sound setting control
 - o Simple controls for monitoring and managing:
 - Power
 - Battery selection, battery level meter and power usage
 - 230V AC load limiter (settable between 5 amps & 16 amps)
 - Solar panel charging levels (where fitted)
 - Heating control of Alde heating systems
 - Environment monitoring with internal and external temperature and internal humidity levels
 - Selected lighting control with soft-start dimming
 - Air-conditioning compatible with Dometic and Truma (dealer fit option, model dependent)
 - Refrigeration control and monitoring via CI-bus connection
 - o Swift Command App with Bluetooth connectivity when with the vehicle, to manage and monitor key vehicle functions from your mobile device including power, heating and selected lighting
 - o **NEW** Swift Command website, to control and monitor when away from your vehicle (subject to Wi-Fi or GSM network coverage)
 - Includes the useful 'Places of Interest' feature including 'Campsites' from the Camping & Caravanning Club and Swift dealership locations
 - View location history along with system information
 - Add Thatcham category S7 tracking for £95 per year
- Alde radiator central heating and water heating with daily programming with LCD touchscreen control and choice of 1kW, 2kW or 3kW setting
- Digital programmable controller for heating and hot water
- **NEW** back up Alde water heater lead (to remember settings)
- Boiler mounted heating circulation pump with manual override to assist with system air bleeding
- Areas under beds and seats and washroom areas warmed by Alde perimeter radiators
- **NEW** Alde underfloor heating
- Fixed bolsters either side of front chest with integrated rear heating vents
- **NEW** additional Alde sensor in bedroom
- **NEW** Alde constant water
- 30 litre internal fresh water tank with additional external pump for filling or direct feed to taps in all models
- Addition of water tank gauge and filling function on Swift Command power supply unit

- High flow rate onboard pump with chrome effect taps for reliable, high performance water supply
- Onboard semi-rigid fresh water pipes
- Large bore underslung rigid waste pipes
- Isolation taps for gas appliances
- Fully protected mains electric system
- 25 metre mains hook-up cable
- 25 amp switchmode charger/transformer
- Low energy LED lighting throughout interior including:
 - Over-locker lighting
 - Underlocker lighting within fascia moulding
 - **NEW** adjustable and dimmable under-locker spotlights with USB points
 - Illuminated pelmets above side windows
 - Feature lighting to front 'A' pillars
 - Downlights set in plinth over kitchen locker
 - Low level night lights
 - Light above wardrobe
- A minimum of four 230V sockets throughout (not including cooker and microwave) and two twin USB points
- Stylish front binnacle design incorporating chrome effect socket surrounds and audio jack plug to speakers in sunroof surround and washroom
- Chrome effect sockets and switches
- Status 570 directional digital / analogue TV/FM aerial and booster
- Two TV stations with 230V, 12V and aerial sockets

SAFETY & SECURITY

- Convenient one-key high security locks
- VIN CHIP™ identification system concealed within construction to deter theft and aid quick recovery
- CRiS identity number labels on windows and caravan chassis
- Swift Command Tracker, a Thatcham Category S7 approved pro-active tracker pre-installed as part of Swift Command system (subject to annual subscription)
- Passive infra-red alarm system with tilt sensor and key fob operation
- AL-KO ATC trailer stability control
- AL-KO AKS 3004 stabiliser
- AL-KO secure wheel lock(s)
- Smoke alarm
- Carbon monoxide alarm

CUSTOMER SERVICE

- 10 year manufacturer backed bodyshell warranty

OPTIONS

Factory Fit

- Alternative fabric scheme (Zinc based on Conqueror)
- **NEW** E&P hydraulic auto-levelling system (includes 100Ah leisure battery)

Dealer Fit

- Swift Command Tracker by Sargent annual subscription
- Wrap-around front seating in addition to drawer chest
- Weight plate upgrade (model dependent)
- Roof mounted air conditioning unit (model dependent)
- Yuasa YBX Active Leisure & Marine L36 battery
- Thule rail mounted rear cycle rack (G2 Elite)

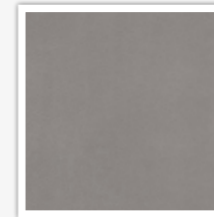


FABRIC OPTIONS

Within the Elegance range there are two fabric options available; the **NEW** Ultraleather® Brisa soft furnishing scheme that comes as standard or the optional Zinc soft furnishing scheme (based on Conqueror - see below). Please ask your dealer for full details.

SEATING

BRISA



ZINC (OPTIONAL)

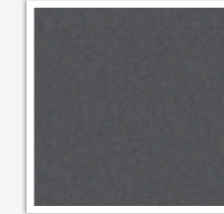


CUSHIONS

BRISA

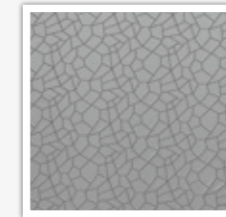


ZINC (OPTIONAL)

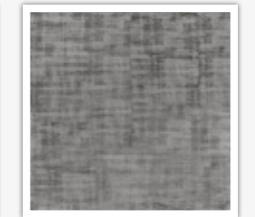
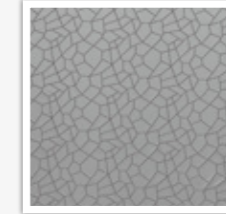


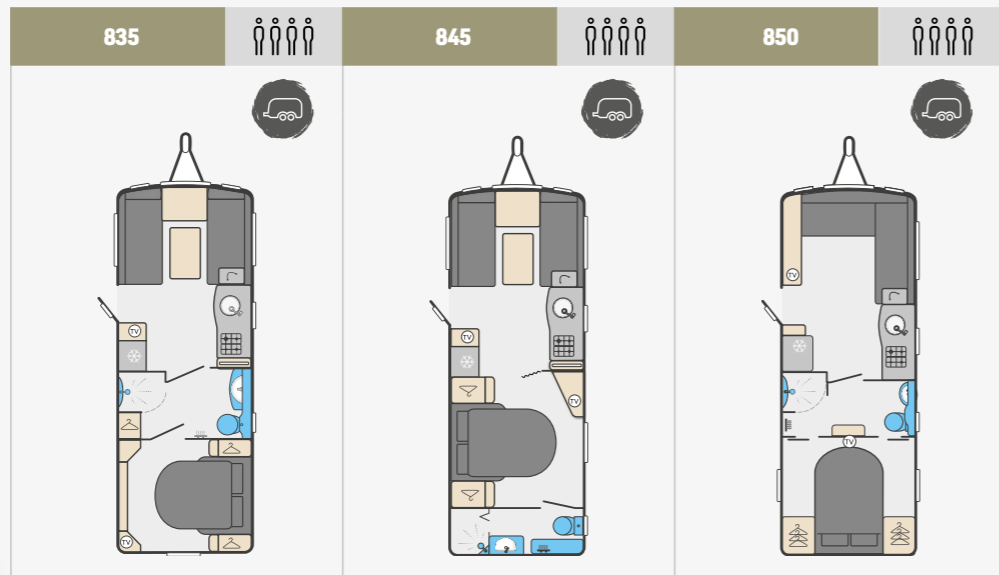
CURTAINS/WALLBOARD

BRISA



ZINC (OPTIONAL)





	835	845	850
Berths	4	4	4
Number of axles	2	2	2
Internal length (at bed box height)	6.36m / 20'10"	6.36m / 20'10"	6.36m / 20'10"
Overall width*	2.45m / 8'0"	2.45m / 8'0"	2.45m / 8'0"
Overall height (inc. TV Aerial)*	2.59m / 8'6"	2.59m / 8'6"	2.59m / 8'6"
Maximum internal headroom	1.95m / 6'5"	1.95m / 6'5"	1.95m / 6'5"
Overall length*	7.98m / 26'2"	7.98m / 26'2"	7.98m / 26'2"
Awning A / A dimension	10.49m / 34'5"	10.49m / 34'5"	10.49m / 34'5"
Mass in Running Order (inc. tolerance)	1775kg / 34.9cwt	1740kg / 34.3cwt	1770kg / 34.8cwt
Maximum Technical Permissible Laden Mass	1976kg / 38.9cwt	1941kg / 38.2cwt	1971kg / 38.8cwt
Total user payload	201kg / 4.0cwt	201kg / 4.0cwt	201kg / 4.0cwt
Personal effects payload	160kg / 3.1cwt	160kg / 3.1cwt	160kg / 3.1cwt
Factory fit options	41kg / 0.8cwt	41kg / 0.8cwt	41kg / 0.8cwt
Tyre size	185 / 70 R14 88 T	185 / 70 R14 88 T	185 / 70 R14 88 T
Thermal insulation grade	THREE	THREE	THREE
BED SIZES			
Front double	218cm x 153cm / 7'2" x 5'0"	218cm x 153cm / 7'2" x 5'0"	194cm x 121cm / 6'4" x 4'0"
or front nearside single	153cm x 70cm / 5'0" x 2'4"	153cm x 70cm / 5'0" x 2'4"	
and front offside single	153cm x 70cm / 5'0" x 2'4"	153cm x 70cm / 5'0" x 2'4"	
Rear double	184cm x 133cm / 6'0" x 4'4"	184cm x 133cm / 6'0" x 4'4"	189cm x 143cm / 6'2" x 4'8"

MASSSES: The masses are calculated in accordance with EU regulation 1230 / 2012 and NCC code of practice 304.

The Mass in Running Order (MRO) comprises:

1. The mass of the empty caravan as supplied by Swift including loose items such as the hook-up cable, kit bag, entrance step, manuals etc.
2. 10kg allowance for LPG

The MRO is calculated with the fresh water tank, toilet flush tank and water heater empty. If you travel with water in the fresh water tank, toilet flush tank and the water heater the payload will reduce accordingly.

The personal effects is based on the number of berths and the length of the caravan, and includes an allowance of 20kg for a leisure battery.

The Maximum Technical Laden Mass (MTPLM) is the maximum mass allowed when the caravan is fully laden.

WARNING: Under no circumstances should the MTPLM be exceeded.

BED SIZES: Please note that the front double bed sizes quoted are for seating configurations without chest of drawers. The front double bed width for a layout with a chest of drawers fitted will be reduced by 0.4m (1'4") from that stated.

AWNING SIZES: Due to the varying awning designs and sizes the awning sizes given are approximate only. Specific awning sizes must be confirmed by your dealer or the awning manufacturer prior to purchase.

The dimensions given are approximate due to slight variations in suspension ride heights, loading conditions and tyre pressures. Customers should verify the actual dimensions of their touring caravan before committing to anything that could be impacted by these dimensions.

Please note: Any dealer fit options will reduce the overall payload available to the user of the caravan. If you require additional payload it is possible to

upgrade the MTPLM to the upper limit. Please contact your caravan dealer for more information.

LED ROAD LIGHTS: Certain vehicles may require a secondary fuse box when towing models fitted with LED road lighting.



ENGLAND - NORTH WEST

01. **Bardsea Leisure**, Ulverston
bardsealeisure.co.uk
02. **Lancaster Motorhomes and Caravans**, Carnforth
lancastermotorhomesandcaravans.co.uk
03. **Leisure Sales, Sandbach**
leisuresales.co.uk
04. **Preston Caravans & Motorhomes**, Preston
prestoncm.co.uk
05. **North Western Caravans**, Cheadle Hulme
northwesterncaravans.co.uk
06. **Stewart Longton Caravans Ltd**, Chorley
stewartlongton.co.uk

ENGLAND - NORTH EAST

07. **Kimberley Caravans**, Darlington
kimberleycaravans.co.uk
08. **Teesside Caravans**, Thornaby
teessidecaravans.co.uk
09. **Tyneside Leisure World**, Birtley
leisureworldgroup.com
10. **United British Caravans**, Newcastle upon Tyne
unitedbritishcaravans.co.uk

ENGLAND - YORKSHIRE

11. **Wandahome South Cave Ltd**
caravanbuys.com
12. **Yorkshire Coast Caravans**, Bridlington
yorkshirecoastcaravans.co.uk
13. **Catterick Caravans**, Richmond
leisureworldgroup.com
14. **Ebor Leisure World**, York
leisureworldgroup.com
15. **Sheffield Caravans**, Swallownest
qualitycaravans.com
16. **Yorkshire Caravans Of Bawtry**
yorkshirecaravans.com

ENGLAND - WEST MIDLANDS

17. **Salop Leisure Ltd**, Shrewsbury
salopleisure.co.uk
18. **Spinney**, Silverdale
spinney.co.uk
19. **Broad Lane Leisure**, Alcester
broadlane.co.uk

20. **Broad Lane Leisure**, Kenilworth
broadlane.co.uk

21. **Black Country Caravans**
blackcountrycaravans.co.uk

ENGLAND - EAST MIDLANDS

22. **Glossop Caravans**
glossopcaravans.co.uk
23. **Robinsons Caravans**
robinsonscaravans.co.uk
24. **Ryedale Caravan & Leisure Ltd**, Shepshed
ryedateleisure.com
25. **Brayford Leisure**, Lincoln
brayford-caravans.co.uk
26. **Couplands Caravans**, Louth
couplandscaravans.co.uk
27. **Grantham Caravans**, Grantham
granthamcaravans.co.uk
28. **Torksey Caravans**, Lincoln
qualitycaravans.com
29. **White Arches Caravans**, Rushden
white-arches.co.uk

ENGLAND - SOUTH WEST

31. **Davan Caravans Ltd**, Weston-Super-Mare
davan.co.uk
32. **Tamar Caravans**, Plymouth
tamartowing.co.uk
33. **Forest Of Dean Caravans**, Lydney
forestofdeancaravans.co.uk
34. **Golden Castle Caravans Ltd**, Churchdown
goldencastle.co.uk
35. **Highbridge Caravan Centre**, Highbridge
highbridgecaravans.co.uk
36. **Swindon Caravan Centre**, Wootton Bassett
swindoncaravansgroup.com
37. **Tilshead Caravans**, Salisbury
tilshead-caravans.com

ENGLAND - SOUTH EAST

38. **Pioneer Caravans**, Peterborough
pioneercaravans.co.uk
39. **Homestead Caravan Centre**, Weeley
homesteadcaravans.co.uk
40. **MG Caravans**, Royston
mgcaravans.com
41. **Norwich Caravans**
norwich-caravans.co.uk
42. **Greentrees Caravan Store**
greentrees-caravanstore.co.uk
43. **Bicester Caravans & Leisure**
bicestercaravanandleisure.co.uk
44. **Oxford Caravan Centre**
swindoncaravansgroup.com
45. **Caravan Tech**
caravantech.co.uk
46. **Chichester Caravans**, Nutbourne
chichestercaravans.co.uk
47. **Winchester Caravans**
winchestercaravans.com

SCOTLAND

48. **Dee Valley Caravans**, Drumoak
deevalleycaravans.co.uk
49. **Burnhouse Caravans**, Beith
halleycaravans.co.uk
50. **Dumfries Caravans Centre**
dumfriescaravans.com
51. **Kirkcaldy Caravans**
kirkcaldycaravans.com
52. **S & D Harper Ltd**, Elgin
sdharper.co.uk
53. **Gnr Sutherland Caravan Sales**, Tain
sutherlandcaravans.co.uk
54. **Duncans Caravans**, Wishaw
duncancaravans.co.uk
55. **Perthshire Caravans**, Perth
perthshire-caravans.co.uk
56. **Knowepark Caravans**, Livingston
kpcm.co.uk

WALES

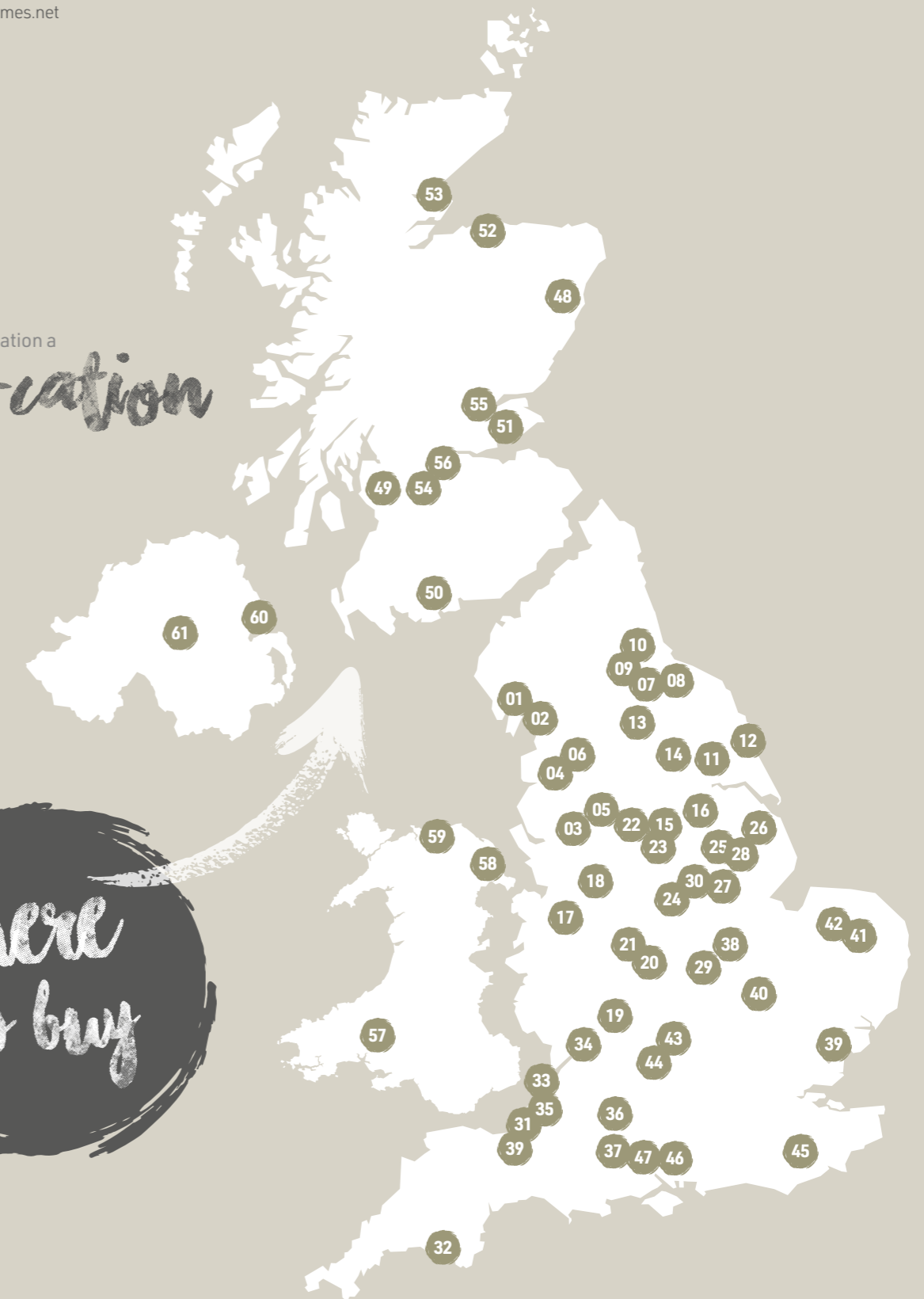
57. **3 As Caravan Co**, Carmarthen
3acaravans.co.uk
58. **Spinney Flintshire**, Deeside
spinney.co.uk
59. **Threeways**, Abergele
threewaysmotorhomes.net

NORTHERN IRELAND

60. **LPC Leisure Ltd**, Bangor
lpccaravans.co.uk
61. **Cookstown Caravans Ltd**
cookstowncaravans.com

Make your staycation a
safe-cation

Where to buy





SWIFT
CREATING SMILES FOR LIFE

VIEW & DOWNLOAD
YOUR COMPLETE RANGE
OF SWIFT BROCHURES HERE
swiftgroup.co.uk/downloads

OR SCAN THE QR CODE



swiftgroup.co.uk

DISCLAIMER

This brochure does not constitute an offer by Swift Group Limited (Swift). Swift reserves the right to alter specifications and prices at any time as materials and conditions demand. Distributors and dealers sell Swift products on their own account and not as agents of Swift. Accordingly, they have no authority to bind Swift or to make any representation or undertaking whatsoever on behalf of Swift. All props are for photographic purposes only and are not included in the specification. Models shown may be fitted with optional extras. Issued September 2021.

CARAVANS • MOTORHOMES • HOLIDAY HOMES - MADE IN BRITAIN BY SWIFT

