



SWIFT
CREATING SMILES FOR LIFE

love
select
compact



love life

LOVE SWIFT

UNDER OUR OWN BLUE SKY

Take me to a place that I call Here,
Hold me in a time that I call This
The air is clean, the light is clear
And now an outdoor kind of bliss
Draws me to a spot I really love;
The door wide open, the kettle on,
A family that fits me like a glove.

A moment's pause for those who've gone
Who still remain in the mind and heart.

And now, under our very own blue sky
The rest of our lives can slowly start
And our spirits can begin to fly
With memories of where we've been,
Those mornings we have yet to know
Those brand new vistas all unseen.
Love life, I say. And now, let's go!

©Ian McMillan 2021

love life
LOVE SWIFT

Contents

PG05 LOVE SELECT COMPACT - FOR NIMBLE VERSATILITY

PG07 HIGHLIGHTS

PG12 EXTERIOR STYLE

PG14 SMART CONSTRUCTION

PG16 FEATURES

PG18 FABRIC OPTIONS

PG20 TECHNICAL SPECIFICATION

PG22 WHERE TO BUY YOUR SELECT COMPACT





Love
Time

Love
Select
compact



For nimble
versatility



SELECT COMPACT

7'5" WIDE

Because the best things come in neat packages, the nimble Select Compact is similar in size to a panel van while offering coachbuilt luxury, giving you extra versatility and confidence on narrower roads. For 2022, Select Compact comes with a NEW cab and dashboard design along with additional standard specification for even more enjoyable getaways.



6





Highlights

Select Compact announces its modern credentials with a **NEW** Fiat cab in Lanzarote Grey and coordinating graphics enhancing the streamlined profile. The designer interior creates a refreshing and welcoming feel, making the perfect base to return to after a day's adventure. There are four versatile layouts including the **NEW** C500 featuring rear lounge with wraparound seating which converts into either two single beds or one double bed.

- 1 High performance, durable Swift AirWave foam in seats and backrests for greater seating and sleeping comfort.
- 2 Driver and Passenger Captains Chairs with swivel base with two armrests and integrated headrest.
- 3 Pleated cab blinds and low energy LED lighting.
- 4 Underseat storage with bench seat cushions and bed mattresses supported by beech slats for extra comfort.
- 5 Exclusive Duvalay Duvalite Apollo Luxe mattress for a comfortable good night's sleep on fixed and drop down beds.
- 6 Rear lounge converts into a double bed or two single beds (model dependent).







- 1 Fully equipped kitchen with foldaway kitchen worktop extension and microwave.
- 2 **NEW** Thetford combination thermostatic oven and grill, plus a 3 burner gas hob with **NEW** electric hot plate.
- 3 **NEW** upgraded main habitation door with window, bin, central locking and integrated door retainer.
- 4 Positive overhead locker catches for secure storage on the move with chrome handles.
- 5 Dometic (Series 8) 85 litre automatic energy selection fridge with 230V, gas and 12V operation.
- 6 Truma heating control for dual fuel Combi boiler for all year round warmth.



10

1 Fully fitted washroom with vanity unit, sink, toilet and shower.

2 100L internal fresh water tank and 68L waste water tank* for superb utility.

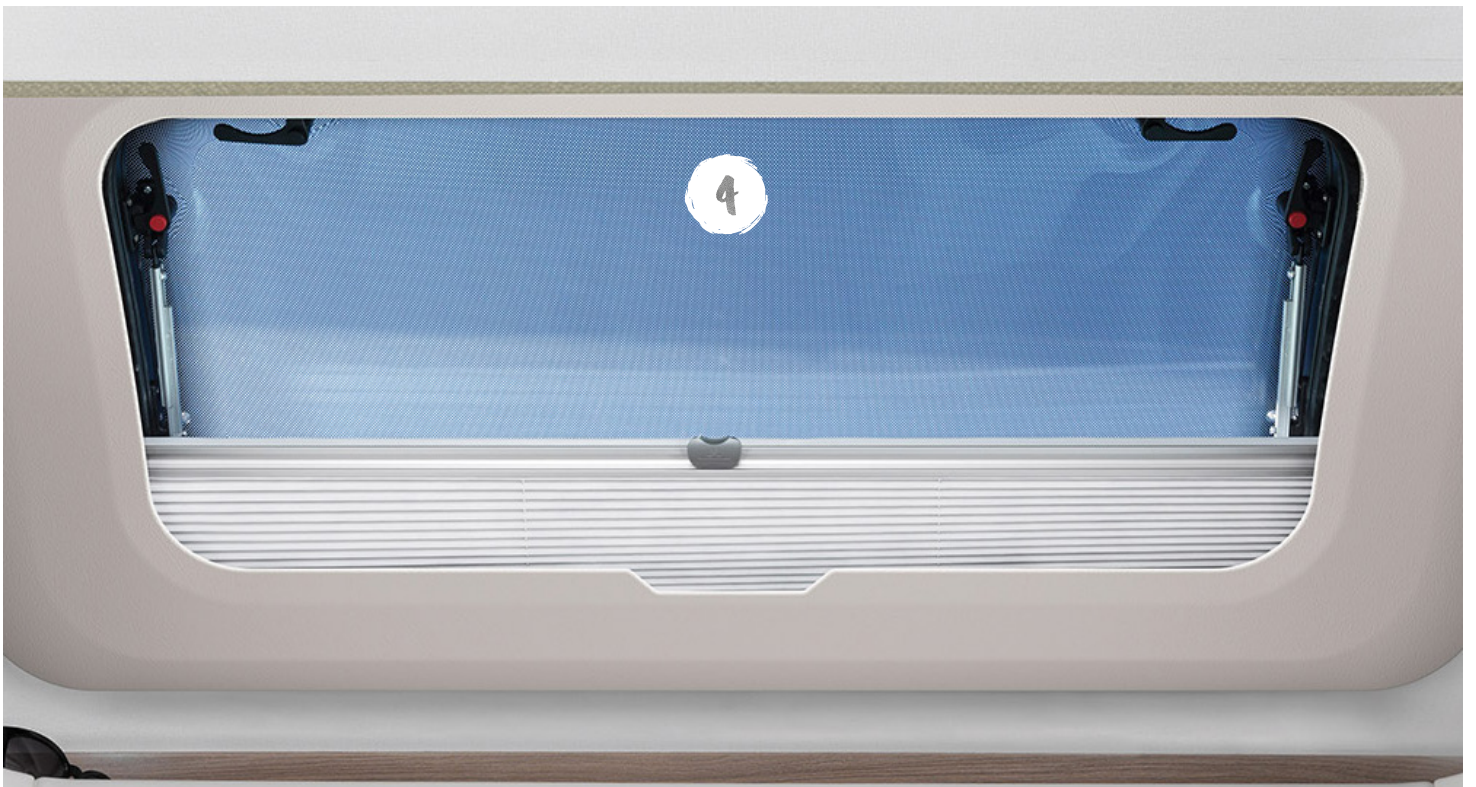
3 **NEW** dashboard design with **NEW** 3.5" Instrument cluster, air-conditioning and airbags.

4 Panoramic opening 'Skyview' sunroof to flood the interior with natural light.

5 **NEW** 7" touchscreen HD colour display incorporating DAB radio with Apple Carplay™ / Android Auto™, USB and Bluetooth.

6 **NEW** steering wheel with steering wheel controls and cruise control for added convenience.

*Model specific



Love
Style



8

Select compact



1

Streamlined aerodynamic profile with stylish new exterior graphics.

5

Bike rack fixing rails fitted to the rear, so you're ready for an adventure.

2

15" alloy wheels or optional 16" alloy wheels with 140bhp upgrade.

6

NEW Fiat cab in Lanzarote Grey with body coloured bumper for sleek styling.

3

Ample LED exterior lighting, including high-level brake light, for better visibility.

7

NEW Euro 6D Final 120bhp, 2.2 litre engine with **NEW** 6-speed manual gearbox and Eco and ESC Packs including anti-slip regulation (ASR), roll over mitigation (ROM) and hill holder.

4

Reversing camera with 7" LCD screen as rear view mirror for smoother parking.

8

All models have a MTPLM of 3300kg and can be driven on a normal category B driving license.

Images may include options, please see feature list.

SMART CONSTRUCTION



SMART is the basis of our intelligent construction system, used across our entire coachbuilt motorhome range. Strong, Modern, Aerodynamic, Resilient and Tested, you can be assured your Swift motorhome is a high quality engineered product.



STRONG

The Strong timberless body frame uses PRe, a tough, hard polyurethane based product that is totally impervious to water and has been proven through use.



MODERN

The SMART construction system uses Modern materials, and has been developed to ensure the exterior profiles maintain the Modern, desirable looks our motorhomes are renowned for.



AERODYNAMIC

We continue to lead the way in Aerodynamics, using Computational Fluid Dynamics to help shape the bodyshell for better fuel consumption.



RESILIENT

All fixings are made into the PRe material to a pre-defined depth. PRe is totally impervious to water and has no veins. This means there is no passage for water from the outer skin, making the motorhome highly Resilient against moisture.



TESTED

Extensive safety Testing at the Millbrook track, plus cold chamber Testing down to minus 15°C and beyond, puts prototypes through conditions most products will never have to experience in a lifetime; all part of the Swift ethos to deliver the best products to you.





HAIL RESISTANT GRP ROOF

Woven GRP outer surface provides greater durability from the elements.



GRP SIDEWALLS

Balanced panel side walls with GRP outer and inner skins. GRP is more impact resistant than aluminium and can be easily repaired, ensuring long lasting good looks and helping protect your investment for the future.



'SMART' GRP sidewall during the production process.



FLOOR CONSTRUCTION

'Sandwich' floor construction with ply upper, high rigidity Styrofoam core and GRP outer skin to provide greater durability from the elements.

FEATURES

EXTERIOR & CONSTRUCTION

- European Whole Vehicle Type Approval ensures compliance with strict weight, dimensions and safety regulations
- **NEW** Fiat Series 8 chassis cab in **NEW** Lanzarote Grey, with body coloured bumper and silver grille trim
- EN 1646-1 Grade 3 classification for heating and thermal insulation, for sub-zero ambient temperatures, confirmed by cold chamber testing
- **NEW** Euro 6D Final 120bhp, 2.2 litre engine with **NEW** 6-speed manual gear box and ESC & Eco Packs as standard
 - ESC includes: anti-slip regulation (ASR), roll over mitigation (ROM) and hill holder
 - ECO includes; stop and start system, smart alternator and more effective energy saving fuel pump
- 75L fuel tank and AD-blue based after treatment system with 19L tank
- SMART construction with full GRP body shell:
 - Strong, moisture proof 'PURE' Polyurethane timberless framed body shell with HD polystyrene insulation core
 - Balanced panel 31mm sandwich side walls with GRP outer and inner skin
 - 70mm sandwich floor construction with GRP outer skin, ply upper and high rigidity Styrofoam core
 - 31mm sandwich construction hail resistant exterior GRP roof, fully bonded for extra strength and flatness, and GRP inner skin
 - Full height GRP rear panel with replaceable lower corner caps
- GRP front low-line pod with opening panoramic sunroof
- Compact narrow bodysell 2000mm internal width and 1947mm interior height
- White extruded skirts link with full GRP rear panel
- Distinctive streamlined exterior front profile
- **NEW** exterior graphics scheme coordinated with cab
- 15" alloy wheels
- Spare wheel on under-slung carrier
- Daytime running lights
- Low energy LED lighting
 - Exclusive styled front marker lights
 - Side marker lights
 - Exclusive rear light clusters
 - High-level brake light
 - Exterior awning light
- **NEW** upgraded main habitation door with window, bin, central locking and integrated door retainer
- Large exterior 'garage' access door (C205 only)
- Provision for 2 x 6kg gas bottles with fitted butane/propane regulator and propane hose
- Flush fitting, double glazed, tinted acrylic windows with night latch ventilation
- Reversing camera with 7" LCD screen rear view mirror
- Heavy-duty rear chassis members ready for optional towbar
- Bike rack fixing rails fitted to the rear
- All models have a MTPLM of 3300kg and can be driven on a normal category B driving license

DRIVING

- **NEW** dashboard design including:
 - **NEW** 7" touchscreen HD colour display
 - **NEW** steering wheel with steering wheel controls
 - **NEW** 3.5" Instrument clusters and infotainment system
 - **NEW** cab light, back lighting & floor lights
 - **NEW** DAB radio with Apple Carplay™ /Android Auto™, USB and Bluetooth
 - **NEW** central area with pocket for smartphone, double USB point and cup holders
 - **NEW** door pockets with bottle holder

- Cruise control
- Cab air-conditioning
- Driver and passenger airbags
- ABS brakes
- EBD (electronic brake force distribution)
- Immobiliser with rolling code
- Variable power steering
- Electrically adjusted and heated wing mirrors with DAB radio aerial
- Electrically operated and tinted cab windows
- Adjustable headlamp height
- Adjustable steering wheel position
- Pleated cab blinds (front and side blinds)
- Removable and bleachable cab carpet
- Central dash mounted holder for full width tablet with USB point
- Driver and passenger captain chairs both with:
 - Position, height and rake adjustment
 - Swivel base
 - Two armrests
 - Integrated headrest
 - Fully upholstered covers
 - Seat base surrounds

LIVING, RELAXING & SLEEPING

- Langholme soft furnishing scheme with complementary scatter cushions
- Aralie Sen woodgrain with contemporary colouring and Aralie Sen overhead lockers (except kitchen)
- French Oak effect, high impact, scratch resistant floor lino
- Sectioned removable and bleachable carpets for flexibility
- Removable stepwell mat
- Two-position front seating arrangement with two forward facing travelling seats
- Ergonomically shaped rear travelling seats
- Lap and diagonal seat belts on all designated passenger seats
- High performance, durable Swift AirWave foam in seats and backrests for greater seating and sleeping comfort
- Seat backrest ventilation boards
- Lounge bench seat cushions and bed mattresses supported by beech slats for extra comfort
- Exclusive Duvalay Duvalite Apollo Luxe mattress containing Freshtec – a market leading high spec foam offering maximum airflow for a cool, comfortable good night's sleep on fixed and drop down beds
- Height adjustable drop-down bed with drop level to seats (C404 only)
- Rooflight with flyscreen and adjustable blind
- Pleated four sided cassette blinds with flyscreens on all windows
- Soft touch, automotive style decorative blind and flyscreen surrounds (except kitchen and washroom)
- Metal curtain tracks for room dividers and washrooms (model specific)
- Easy action concertina door flyscreen

EATING

- **NEW** Thetford combination thermostatic oven and grill, plus a 3 burner gas hob with **NEW** electric hot plate, all with electronic ignition. Hob features a glass lid with automatic gas shut-off functionality
- Built-in microwave oven with digital controls
- Dometic (Series 8) 85 litre automatic energy selection fridge with 230V, gas and 12V operation
- Kitchen worktop in Ferro dark grey with textured finish and durable stainless steel sink

- Foldaway kitchen worktop extension
- Vector chrome effect kitchen mixer tap
- Removable drainer and food grade nylon chopping board nestle together for easy storage in dedicated location
- Kitchen rooflight with flyscreen and blind

WASHING

- Washroom design with vanity unit, sink and shower
- Chrome effect mixer tap for vanity and dedicated showerhead
- High gloss white washroom wallboard
- Thetford cassette toilet with electric flush and 18 litre wheeled tank
- Overhead cupboard storage
- Micro-Heki rooflight with flyscreen
- 32mm thick entrance door with domestic style mortice lock and handle

STORAGE

- Positive overhead locker catches for secure storage on the move with chrome handles
- Lounge seat and bed tops spring assisted for easy storage access (except travelling seats)
- Desmo table with dedicated storage location
- Drawer storage under oven (model specific)

UTILITIES

- EC400 Control unit with simple controls for monitoring and managing:
 - Battery selection and battery level meter
 - Selected lighting control
 - Water system controls and tank levels
- Dual fuel Truma Combi boiler for excellent heating efficiency
- Digital programmable controller for heating and hot water
- Truma 'Crash Sensor Mono' regulator for en-route use of heating and water heating
- Pressurised fresh water system with self-priming pump and accumulator
- 12V exterior power point for pump filling of water tank (pump not supplied)
- 100 litre internal fresh water tank with level sensor
- 50 litre waste water tank with level sensor.
- Electronically operated drain valves on fresh and waste water tanks
- Winter Pack fitted with waste water tank heater with en-route heating to keep defrosted, insulated drain valve covers and fridge vent covers
- Fully sealed, long life, 80 Amp-hour (Dir 2006/66/EC) leisure battery below driver's seat
- Mains 230V supply, via easy-access consumer unit, to sockets, fridge, heater, water heater and battery charger/transformer
- 25 metre mains hook-up cable
- 25 Amp/300 Watt charger/transformer for leisure batteries
- Ultra-low energy LED lighting system throughout interior including:
 - Downlights
 - Over-locker ambient lighting
 - Adjustable cab reading lights
 - Strip lighting in kitchen china locker
- A minimum of four chrome 230V sockets and increased dedicated USB points including **NEW** under locker USB points
- USB socket for rear passenger seats
- Status 570 TV aerial
- TV points with 230V and 12V sockets and aerial socket

SAFETY & SECURITY

- VIN CHIP™ identification system concealed within construction to deter theft and aid quick recovery
- Single key for all habitation doors
- Key fob operated remote central locking
- Smoke alarm
- Carbon monoxide alarm

CUSTOMER SERVICE

- Manufacturer backed 10 year bodyshell warranty

OPTIONS

Factory Fit

- Upgrade to 140bhp, 2.2 litre engine with 6-speed manual gearbox
- Upgrade to 140bhp, 2.2 litre engine with 9-speed full automatic transmission and 16" alloy wheels
- Detachable homologated tow bar and electrics
- 'SwiftShield' soft furnishing scheme
- Thule roll-out awning

Dealer Fit

- Thule rail mounted rear cycle rack*

* Dependent on model, visibility through rear camera may be reduced when bicycles are carried on the optional bike carrier



FABRIC OPTIONS

Within the Select Compact range the 'Langholme' fabric scheme comes as standard.

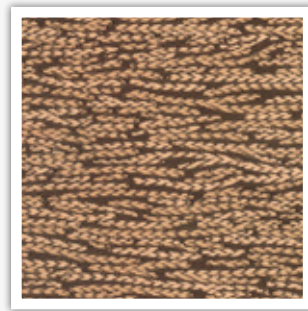
SEATING

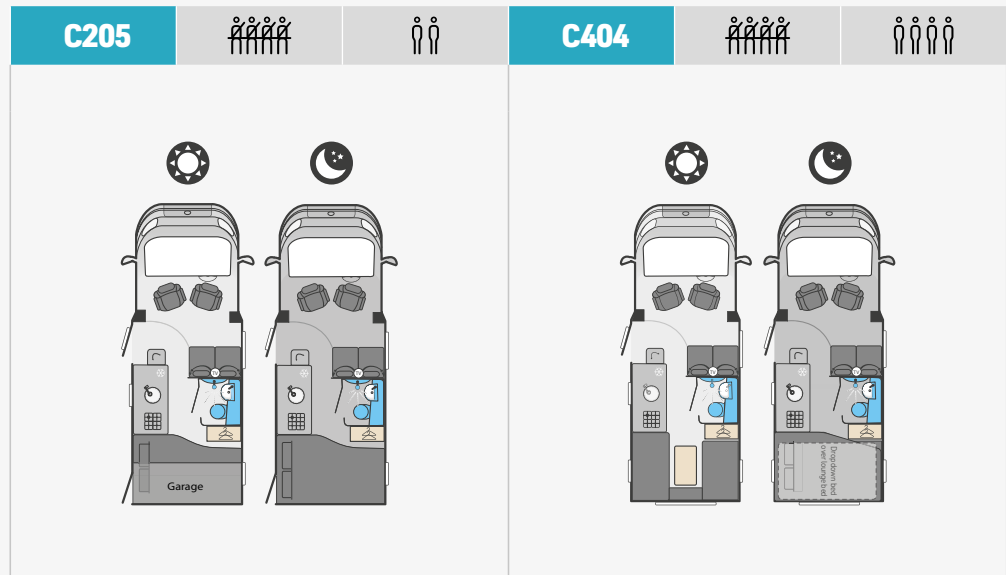


CUSHION

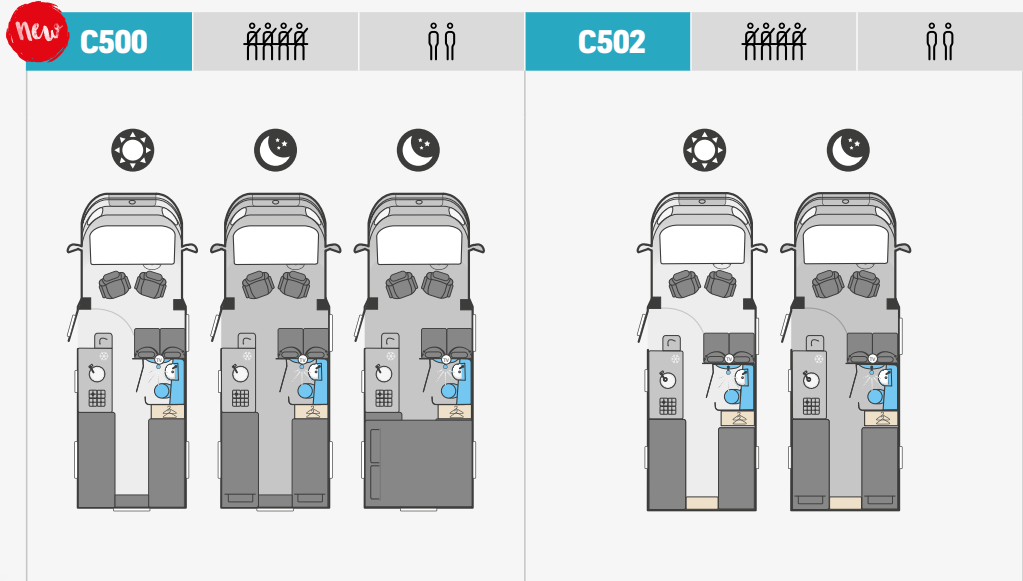


WALLBOARD





	Standard	Optional	Optional	Standard	Optional	Optional
Fiat MultiJet diesel engine	120	140	140 Auto	120	140	140 Auto
Engine capacity	2.2ltr					
Engine power	120 Hp @ 3500 rpm	140 Hp @ 3500 rpm	140 HP @ 3500rpm	120 Hp @ 3500 rpm	140 Hp @ 3500 rpm	140 HP @ 3500rpm
Engine torque	320 Nm @ 1400 rpm	350 Nm @ 1400 rpm	380 Nm @ 1400rpm	320 Nm @ 1400 rpm	350 Nm @ 1400 rpm	380 Nm @ 1400rpm
Wheel base	3.80m / 12'6"			3.80m / 12'6"		
Seat belts (inc. driver)	4			4		
Berths (sleeping positions)	2			4		
Overall length	5.99m / 19'8"			5.99m / 19'8"		
Overall body width (mirrors folded)	2.26m / 7'5"			2.26m / 7'5"		
Overall height	2.78m / 9'1"			2.78m / 9'1"		
Optional awning	Thule 4200 3.0m			Thule 4200 3.0m		
Maximum technical permissible laden mass (A)	3300kg			3300kg		
Mass in running order (B)	2705kg	2705kg	2738kg	2775kg	2775kg	2808kg
Maximum user payload (A-B)	595kg	595kg	562kg	525kg	525kg	492kg
Thermal insulation grade	THREE			THREE		
Recommended maximum trailer weight	2000kg			2000kg		
Gross train weight	5300kg			5300kg		
BED SIZES						
Rear double	194cm x 131cm / 6'4" x 4'4"			193cm x 120cm / 6'4" x 3'11"		
Rear nearside single						
Rear offside single						
Drop down bed				183cm x 118cm / 6'1" x 3'10"		



	Standard	Optional	Optional	Standard	Optional	Optional
Fiat MultiJet diesel engine	120	140	140 Auto	120	140	140 Auto
Engine capacity	2.2ltr					
Engine power	120 Hp @ 3500 rpm	140 Hp @ 3500 rpm	140 HP @ 3500rpm	120 Hp @ 3500 rpm	140 Hp @ 3500 rpm	140 HP @ 3500rpm
Engine torque	320 Nm @ 1400 rpm	350 Nm @ 1400 rpm	380 Nm @ 1400rpm	320 Nm @ 1400 rpm	350 Nm @ 1400 rpm	380 Nm @ 1400rpm
Wheel base	3.80m / 12'6"			3.80m / 12'6"		
Seat belts (inc. driver)	4			4		
Berths (sleeping positions)	2			2		
Overall length	6.65m / 21'10"			6.65m / 21'10"		
Overall body width (mirrors folded)	2.26m / 7'5"			2.26m / 7'5"		
Overall height	2.78m / 9'1"			2.78m / 9'1"		
Optional awning	Thule 4200 3.0m			Thule 4200 3.0m		
Maximum technical permissible laden mass (A)	3300kg			3300kg		
Mass in running order (B)	2797kg Est	2797kg Est	2830kg Est	2797kg	2797kg	2830kg
Maximum user payload (A-B)	503kg	503kg	470kg	503kg	503kg	470kg
Thermal insulation grade	THREE			THREE		
Recommended maximum trailer weight	2000kg			2000kg		
Gross train weight	5300kg			5300kg		
BED SIZES						
Rear double	192cm x 183cm / 6'4" x 6'0"					
Rear nearside single	196cm x 68cm / 6'5" x 2'3"			196cm x 74cm / 6'5" x 2'5"		
Rear offside single	183cm x 68cm / 6'0" x 2'3"			184cm x 74cm / 6'0" x 2'5"		
Drop down bed						

GENERAL TECHNICAL NOTES

1. The Maximum User Payload includes:

- The conventional load (this is the allowance for passengers)
- Essential habitation equipment (items and fluids required for safe and proper functioning of habitation equipment)
- Optional equipment (items available from the manufacturer over and above the standard specification)
- Personal effects (those items not covered by the above)

2. The Mass in Running Order is the mass of the unladen vehicle including a 75kg allowance for the driver plus engine coolants and 90% of the fuel tank capacity and 1 x 6kg Calor Lite LPG cylinder. The MRO is calculated with the fresh water tank empty. If you travel with water in the fresh water tank then the payload will reduce accordingly.

3. Please take care to ensure that you have allowed for the masses of all items you intend to carry in the motorhome, e.g. passengers, optional equipment, essential habitation equipment and personal effects, such as clothing, food, pets, bicycles, sailboards, sports equipment etc.

4. Warning - under no circumstances should the maximum technical permissible laden mass of this motorhome be exceeded.

Est = Estimate

ENGLAND - NORTH WEST

01. **Todds Motorhome Specialists**, Preston
toddsmotorhomes.co.uk

02. **Preston Caravans & Motorhomes**,
prestoncm.co.uk

03. **Lowe & Rhodes**, Stoke-on-Trent
loweandrhodes.co.uk

ENGLAND - YORKSHIRE

04. **Ebor Leisure World Group**
leisureworldgroup.com

05. **BnB Motorhomes**, Keighley
bnbmotorhomes.co.uk

ENGLAND - WEST MIDLANDS

06. **South Hereford Motorcaravan Centre**
motorcaravancentre.co.uk

07. **Salop Leisure**, Shrewsbury
salopleisure.co.uk

08. **Broad Lane Leisure**, Alcester
broadlane.co.uk

09. **Broad Lane Leisure**, Kenilworth
broadlane.co.uk

10. **AEG Motorhomes**, Stourbridge
aegmotorhomes.co.uk

ENGLAND - EAST MIDLANDS

11. **Glossop Caravans**, Glossop
glossopcaravans.co.uk

12. **Don Amott Leisure Ltd**, Derby
leisurekingdom.co.uk

13. **Timberland Motorhomes**, Chesterfield
timberlandmotorhomes.com

14. **Camper UK**, Lincoln
camperuk.co.uk

15. **Brownhills Motorhomes**, Newark
brownhills.co.uk

16. **Lowdham Leisureworld**, Nottingham
lowdhams.com

17. **Heart of England Motorhomes**,
Northampton
heartofenglandmotorhomes.co.uk

18. **Croyland Car Megastore**, Rushden
croylandcarmegastore.co.uk

ENGLAND - SOUTH WEST

19. **Alan Kerr Ltd**, Paignton
alankerr.co.uk

20. **Dolphin Motorhomes**, Christchurch
dolphinmotorhomes.co.uk

21. **Highbridge Caravan Centre**, Highbridge
highbridgecaravans.co.uk

22. **West Country Motorhomes**, Brent Knoll
westcountrymotorhomes.co.uk

23. **West Country Motorhomes**, Swindon
westcountrymotorhomes.co.uk

24. **Chelston Motorhomes**, Wellington
chelstononline.co.uk

ENGLAND - SOUTH EAST

25. **Homestead Caravan Centre**, Weeley
homesteadcaravans.co.uk

26. **Dolphin Motorhomes**, Southampton
dolphinmotorhomes.co.uk

27. **Downtide Caravans & Leisure**, Norwich
downtide.com

28. **Caravan Tech**, Etchingham
caravantech.co.uk

29. **Stewart Mouland Motorcaravans**,
stewartmouland.co.uk

SCOTLAND

30. **Perthshire Caravans**, Errol
perthshire-caravans.co.uk

31. **Knowepark Caravans & Motorhomes**,
Livingston
kpcm.co.uk

WALES

32. **3 As Caravan Co**, Carmarthen
3acaravans.co.uk

33. **Spinney Flintshire**, Deeside
spinney.co.uk

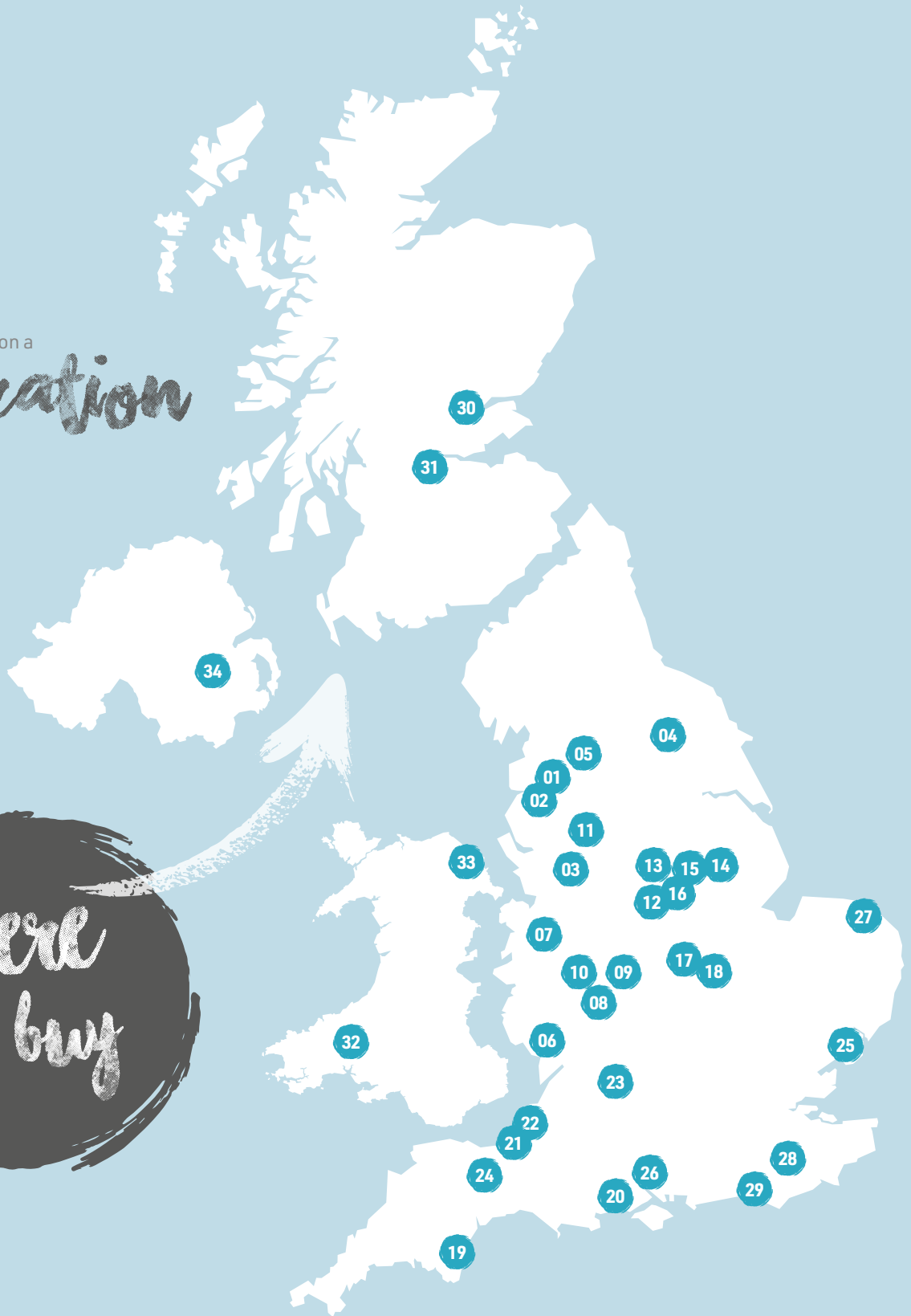
NORTHERN IRELAND

34. **Thompson Leisure**, Dromore
thompsonleisure.com

Make your staycation a

safe-cation

*Where
to buy*





SWIFT
CREATING SMILES FOR LIFE

VIEW & DOWNLOAD
YOUR COMPLETE RANGE
OF SWIFT BROCHURES HERE
swiftgroup.co.uk/downloads

OR SCAN THE QR CODE



SCAN FOR MORE

swiftgroup.co.uk

DISCLAIMER

This brochure does not constitute an offer by Swift Group Limited (Swift). Swift reserves the right to alter specifications and prices at any time as materials and conditions demand. Distributors and dealers sell Swift products on their own account and not as agents of Swift. Accordingly, they have no authority to bind Swift or to make any representation or undertaking whatsoever on behalf of Swift. All props are for photographic purposes only and are not included in the specification. Models shown may be fitted with optional extras. Issued September 2021.

CARAVANS • MOTORHOMES • HOLIDAY HOMES - MADE IN BRITAIN BY SWIFT