



SWIFT

# ELEGANCE GRANDE



LOVE LIFE  
LOVE SWIFT





At the top end of the Swift Caravan line-up is Elegance Grande. This 8-foot wide, twin-axle trailblazer embraces a full remodel amplifying its refined status for 2023. From an enhanced visual appeal through to premium features, including Alde underfloor heating and the optional E&P self-levelling system, no specification has been overlooked across its three favourable layouts.

# CONTENTS

**PG04** HOME FROM HOME

**PG06** PRACTICALITY

**PG08** STYLE AND COMFORT

**PG10** ELEGANCE GRANDE LOOKS

**PG12** FABRIC OPTIONS

**PG14** SMART CONSTRUCTION





CLICK HERE FOR A FULL FEATURE LIST

[www.swiftgroup.co.uk/elegancegrande](http://www.swiftgroup.co.uk/elegancegrande)



### ELEGANCE GRANDE COMFORT

Inside, Elegance is refreshed with a NEW lighter woodgrain, lighter flooring, sophisticated handleless cupboard doors, and a soft furnishing scheme that fuses comfort, functionality and sophistication.

- 01.** Glamorous **NEW** Ultraleather® Dusk soft furnishing scheme
- 02.** Front chest with soft-close drawer, concealed drawer inside and slide-out extending top
- 03.** Alde underfloor heating throughout plus radiator central heating and water heating
- 04.** Easy Accuride bed make up system on front beds with Beech slat seat and bed bases
- 05.** Panoramic front sunroof with surround incorporating recessed lights and speakers
- 06.** Alde constant water and 30 litre internal fresh water tank





CLICK HERE FOR A FULL FEATURE LIST

[www.swiftgroup.co.uk/elegancegrande](http://www.swiftgroup.co.uk/elegancegrande)



### ELEGANCE GRANDE PRACTICALITY

- 01. NEW** Domestic style L-shaped kitchen unit with improved storage featuring soft close drawers and doors, plus under-counter feature LED strip lighting
- 02. NEW** ventilated Dometic flatbed microwave oven with digital controls
- 03.** Kitchen extractor hood and **NEW** Mini-Heki rooflight
- 04.** Thetford thermostatic oven and grill with 3-burner gas hob with cast iron frets and an electric hot plate
- 05.** Tall slimline dual-hinged Dometic (Series 10) 177 litre fridge with removable freezer compartment and **NEW** salad crisper lid
- 06.** Control and monitor onboard systems with the 7" LCD Swift Command touchscreen panel







CLICK HERE FOR A FULL FEATURE LIST

[www.swiftgroup.co.uk/elegancegrande](http://www.swiftgroup.co.uk/elegancegrande)



### ELEGANCE GRANDE STYLE AND SUBSTANCE

- 01. NEW** upgraded boutique style dedicated washroom incorporating illuminated shower console and durable shower tray
- 02. NEW** Alde ladder towel radiator, towel rail, shaving mirror and tumblers
- 03.** Ecocamel Jetstorm showerhead for a powerful shower that uses less water
- 04.** Exclusive Duvalay Duvalite Apollo Luxe mattress with Freshtec for a great night's sleep
- 05.** Sumptuous full-height, deep padded headboard to fixed beds
- 06.** Electric Midi-Heki rooflight with flyscreen and adjustable concertina blind with **NEW** bedside switch
- 07.** Adjustable and dimmable under-locker spotlights with USB points and **NEW** wireless charging point in lounge\*

\*Model specific





CLICK HERE FOR LAYOUTS

[www.swiftgroup.co.uk/elegancegrande](http://www.swiftgroup.co.uk/elegancegrande)



### ELEGANCE GRANDE

8'0" WIDE



CLICK HERE  
TO CHOOSE  
YOUR LAYOUT

[swiftgroup.co.uk/elegancegrande/technical](http://swiftgroup.co.uk/elegancegrande/technical)



- 01. Streamlined aerodynamic profile with **NEW** contrasting grey GRP sidewall with **NEW** stylish exterior graphics scheme
- 02. AL-KO stabiliser and shock absorbers for a safer, smoother towing experience
- 03. Hail-resistant exterior GRP roof with **NEW** 100W lightweight roof-mounted solar panel
- 04. Panoramic sunroof and triple flush fitting front window design
- 05. Ample LED exterior lighting, including high-level marker for better visibility and **NEW** offside and nearside awning light

- 06. **NEW** full height GRP rear panel with **NEW** exclusive LED light clusters and **NEW** sweeping front panel in GRP with LED front marker lights
- 07. **NEW** diamond cut Edge alloy wheels
- 08. **NEW** Extra wide access, dual coloured gas locker door, plus BBQ point, 230V external mains point, cold water shower point with showerhead and **NEW** exterior TV socket
- 09. **NEW** MTPLM limit increases to 2250kg, maximising additional payload, so even more can be taken on the road



# 12 FABRIC OPTIONS



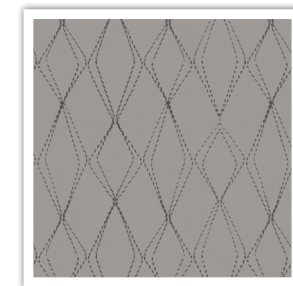
## ELEGANCE GRANDE FABRIC OPTIONS

Within the Elegance Grande range there are two fabric options available; the **NEW** Ultraleather® Dusk soft furnishing scheme that comes as standard or the optional Aquaclean® Truffle soft furnishing scheme. Please ask your dealer for full details.

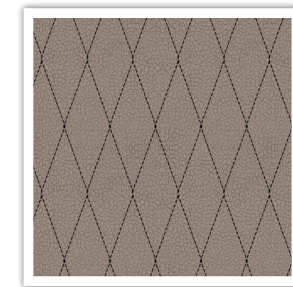


### SEATING

**DUSK**

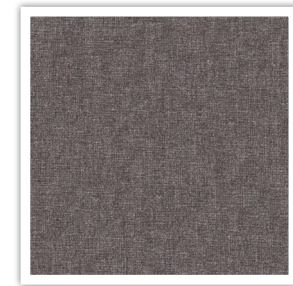
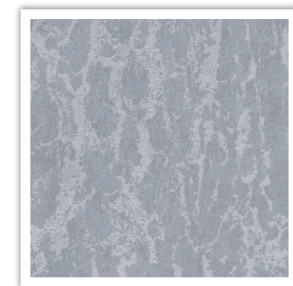


**TRUFFLE (OPTIONAL)**



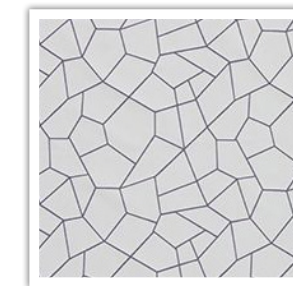
### CUSHION

**DUSK**



### CURTAINS

**DUSK**



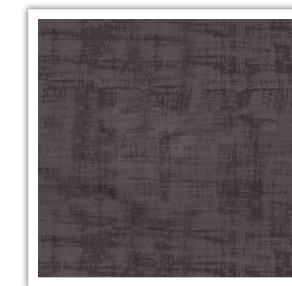
### WALLBOARD

**DUSK**



### HEADBOARD

**DUSK**







SMART is the basis of our intelligent construction system, used across our entire touring caravan range. Strong, Modern, Aerodynamic, Resilient and Tested, you can be assured your Swift caravan is a high quality engineered product.



### STRONG

The Strong timberless body frame uses PURe, a tough, hard polyurethane based product that is totally impervious to water and has been proven through use.



### MODERN

The SMART construction system uses Modern materials, and has been developed to ensure the exterior profiles maintain the Modern, desirable looks our caravans are renowned for.



### AERODYNAMIC

We continue to lead the way in Aerodynamics, using Computational Fluid Dynamics to help shape the bodysell for better fuel consumption and safer towing.



### RESILIENT

All fixings are made into the PURe material to a pre-defined depth. PURe is totally impervious to water and has no veins. This means there is no passage for water from the outer skin, making the caravan highly Resilient against moisture.



### TESTED

Extensive safety Testing at the Millbrook track, plus cold chamber Testing down to minus 15°C and beyond, puts prototypes through conditions most products will never have to experience in a lifetime; all part of the Swift ethos to deliver the best products to you.

### HAIL RESISTANT GRP ROOF

Woven GRP outer surface provides greater durability from the elements.

### GRP SIDEWALLS

Balanced panel side walls with GRP outer and inner skins. GRP is more impact resistant than aluminium and can be easily repaired, ensuring long lasting good looks and helping protect your investment for the future.

### FLOOR CONSTRUCTION

'Sandwich' floor construction with ply upper, high rigidity Styrofoam core and GRP outer skin to provide greater durability from the elements.







# ELEGANCE GRANDE



**VIEW & DOWNLOAD YOUR COMPLETE  
RANGE OF SWIFT BROCHURES HERE:**

[swiftgroup.co.uk/buy/brochures/](https://swiftgroup.co.uk/buy/brochures/)



**FIND YOUR NEAREST  
DEALER HERE:**

[swiftgroup.co.uk/find-a-dealer/](https://swiftgroup.co.uk/find-a-dealer/)

## DISCLAIMER

This brochure does not constitute an offer by Swift Group Limited (Swift). Swift reserves the right to alter specifications and prices at any time as materials and conditions demand. Distributors and dealers sell Swift products on their own account and not as agents of Swift. Accordingly, they have no authority to bind Swift or to make any representation or undertaking whatsoever on behalf of Swift. All props are for photographic purposes only and are not included in the specification. Models shown may be fitted with optional extras. Issued September 2022.

CARAVANS • MOTORHOMES • HOLIDAY HOMES - MADE IN BRITAIN BY SWIFT

LOVE LIFE  
LOVE SWIFT