



**SWIFT**

# SELECT COMPACT



LOVE LIFE  
LOVE SWIFT





### **SELECT COMPACT**

Offering nimble versatility with coachbuilt quality, Select Compact is a slim-line motorhome that packs a punch, from the all FIAT Series 8 Euro 6D 2.2l through to the boosted specification including dashboard.

# **CONTENTS**

**PG04** HOME FROM HOME

**PG06** PRACTICALITY

**PG08** STYLE AND COMFORT

**PG10** SELECT COMPACT LOOKS

**PG12** FABRIC OPTIONS

**PG14** SMART CONSTRUCTION

# 04 HOME FROM HOME



CLICK HERE FOR A FULL FEATURE LIST

[www.swiftgroup.co.uk/select-compact](http://www.swiftgroup.co.uk/select-compact)



## SELECT COMPACT COMFORT

Select Compact announces its modern credentials with a Fiat cab in Lanzarote Grey and coordinating graphics enhancing the streamlined profile. The designer interior creates a refreshing and welcoming feel, making the perfect base to return to after a day's adventure. There are four versatile layouts including the C500 featuring rear lounge with wraparound seating which converts into either two single beds or one double bed.

- 01.** High performance, durable Swift AirWave foam in seats and backrests for greater seating and sleeping comfort.
- 02.** Driver and Passenger Captains Chairs with swivel base, two armrests and integrated headrest.
- 03.** Pleated cab blinds and low energy LED lighting.
- 04.** Underseat storage with bench seat cushions and bed mattresses supported by beech slats for extra comfort.
- 05.** Exclusive Duvalay Duvalite Alto mattress for a comfortable good night's sleep on fixed and drop down beds.
- 06.** Rear lounge converts into a double bed or two single beds (model dependent).

05



CLICK HERE FOR A FULL FEATURE LIST

[www.swiftgroup.co.uk/select-compact](http://www.swiftgroup.co.uk/select-compact)



### SELECT COMPACT PRACTICALITY

- 01.** Fully equipped kitchen with foldaway kitchen worktop extension and microwave
- 02.** Thetford combination thermostatic oven and grill, plus a 3 burner gas hob with electric hot plate
- 03.** Main habitation door with window, bin, central locking and integrated door retainer
- 04.** Positive overhead locker catches for secure storage on the move with chrome handles
- 05.** Dometic (Series 8) 85 litre automatic energy selection fridge with 230V, gas and 12V operation
- 06.** Truma heating control for dual fuel Combi boiler for all year round warmth
- 07.** Control and monitor onboard systems with a simplified control unit





CLICK HERE FOR A FULL FEATURE LIST

[www.swiftgroup.co.uk/select-compact](http://www.swiftgroup.co.uk/select-compact)



01/



02/

03/



05/



04/

03/



06/

### SELECT COMPACT STYLE AND COMFORT

- 01.** Panoramic opening 'Skyview' sunroof to flood the interior with natural light
- 02.** Fully fitted washroom with vanity unit, sink, toilet and shower
- 03.** 100L internal fresh water tank and 68l waste water tank\* for superb utility
- 04.** Dashboard design with 3.5" Instrument cluster, air-conditioning and airbags
- 05.** 7" touchscreen HD colour display incorporating DAB radio with Apple Carplay™ / Android Auto™, USB and Bluetooth
- 06.** Steering wheel with steering wheel controls and cruise control for added convenience

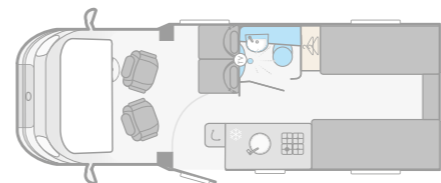
\*Model specific

# 10 | SELECT LOOKS



CLICK HERE FOR A FULL FEATURE LIST

[www.swiftgroup.co.uk/select-compact](http://www.swiftgroup.co.uk/select-compact)



CLICK HERE  
TO CHOOSE  
YOUR LAYOUT

[swiftgroup.co.uk/select-compact/technical](http://swiftgroup.co.uk/select-compact/technical)

- 01.** Streamlined aerodynamic profile with stylish new exterior graphics.
- 02.** 15" alloy wheels or optional 16" alloy wheels with 140bhp upgrade.
- 03.** Ample LED exterior lighting, including high-level brake light, for better visibility.
- 04.** Reversing camera with 7" LCD screen as rear view mirror for smoother parking.
- 05.** Bike rack fixing rails fitted to the rear, so you're ready for an adventure.

- 06.** Fiat cab in Lanzarote Grey with body coloured bumper for sleek styling.
- 07.** Euro 6D Final 120bhp, 2.2 litre engine with 6-speed manual gearbox and Eco and ESC Packs including anti-slip regulation (ASR), roll over mitigation (ROM) and hill holder.
- 08.** All models have a MTPLM of 3300kg and can be driven on a normal category B driving license.

\*Images may include options. Please see full feature list.

# 12 FABRIC SCHEME

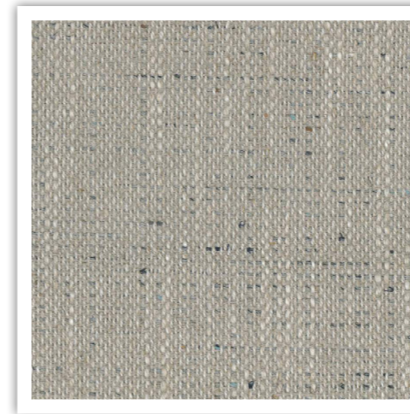


## SELECT FABRIC SCHEME

Within the Select Compact range the 'Langholme' fabric scheme comes as standard.



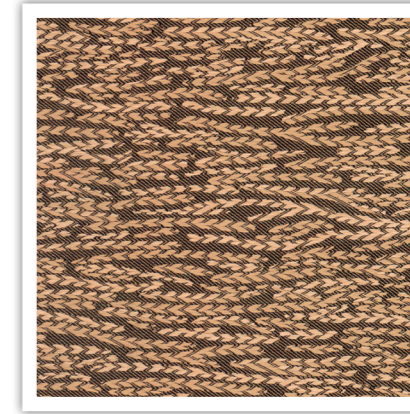
## SEATING



## CUSHIONS



## WALLBOARD





**SMART is the basis of our intelligent construction system, used across our entire motorhome range. Strong, Modern, Aerodynamic, Resilient and Tested, you can be assured your Swift caravan is a high quality engineered product.**



### STRONG

The Strong timberless body frame uses 'PURE', a tough, hard polyurethane based product that is totally impervious to water and has been proven through use.



### MODERN

The SMART construction system uses Modern materials and has been developed to ensure the exterior profiles maintain the Modern desirable looks our motorhomes are renowned for.



### AERODYNAMIC

We continue to lead the way in Aerodynamics using Computational Fluid Dynamics to help shape the bodyshell for better fuel consumption.



### RESILIENT

All fixings are made into the 'PURE' material to a pre-defined depth. 'PURE' is totally impervious to water and has no veins. This means there is no passage for water from the outer skin, making the motorhome highly Resilient to moisture.



### TESTED

Extensive safety and durability Testing at the Millbrook track, and cold chamber Testing down to minus 15°C and beyond, puts prototypes through conditions most products will never have to experience in a lifetime; all part of the Swift ethos to deliver the best products.

### HAIL RESISTANT GRP ROOF

Woven GRP outer surface provides greater durability from the elements.

### GRP SIDEWALLS

Balanced panel side walls with GRP outer and inner skins. GRP is more impact resistant than aluminium and can be easily repaired, ensuring long lasting good looks and helping protect your investment for the future.

### FLOOR CONSTRUCTION

'Sandwich' floor construction with ply upper, high rigidity Styrofoam core and GRP outer skin to provide greater durability from the elements.







# SELECT COMPACT



**VIEW & DOWNLOAD YOUR COMPLETE RANGE OF SWIFT BROCHURES HERE:**

[swiftgroup.co.uk/buy/brochures/](https://swiftgroup.co.uk/buy/brochures/)



**FIND YOUR NEAREST DEALER HERE:**

[swiftgroup.co.uk/find-a-dealer/](https://swiftgroup.co.uk/find-a-dealer/)

## DISCLAIMER

This brochure does not constitute an offer by Swift Group Limited (Swift). Swift reserves the right to alter specifications and prices at any time as materials and conditions demand. Distributors and dealers sell Swift products on their own account and not as agents of Swift. Accordingly, they have no authority to bind Swift or to make any representation or undertaking whatsoever on behalf of Swift. All props are for photographic purposes only and are not included in the specification. Models shown may be fitted with optional extras. Issued September 2022.

CARAVANS • MOTORHOMES • HOLIDAY HOMES - MADE IN BRITAIN BY SWIFT

LOVE LIFE  
LOVE SWIFT