



SWIFT

CREATING SMILES FOR LIFE

love
conqueror



love life

LOVE SWIFT

UNDER OUR OWN BLUE SKY

Take me to a place that I call Here,
Hold me in a time that I call This
The air is clean, the light is clear
And now an outdoor kind of bliss
Draws me to a spot I really love;
The door wide open, the kettle on,
A family that fits me like a glove.

A moment's pause for those who've gone
Who still remain in the mind and heart.

And now, under our very own blue sky
The rest of our lives can slowly start
And our spirits can begin to fly
With memories of where we've been,
Those mornings we have yet to know
Those brand new vistas all unseen.
Love life, I say. And now, let's go!

©Ian McMillan 2021

love life
LOVE SWIFT

Contents

PG05 LOVE CONQUEROR - CONQUER TOGETHER

PG07 HIGHLIGHTS

PG12 EXTERIOR STYLE

PG14 SMART CONSTRUCTION

PG16 FEATURES

PG18 FABRIC OPTIONS

PG20 TECHNICAL SPECIFICATION

PG22 WHERE TO BUY YOUR CONQUEROR





Love
Conqueror

Conquer
Together



CONQUEROR

7'6" WIDE

Conqueror, Swift's legendary touring caravan range, is reborn for 2022 with an exquisite new image and high-grade specification.

Choose from 4 single-axle models, each with a sleek silhouette and stylish designer graphics for a highly desirable look.



Highlights

From the contemporary profile to the business jet-inspired living area with cream high-gloss lockers and atmospheric lighting, the range's premium identity announces itself at every turn. Natural light filters through the panoramic front sunroof on to light woodgrains and French oak effect flooring, while Alde radiator central and water heating maintain a comfortable environment.

- 1** Effortlessly chic Zinc soft furnishing scheme for a refined setting
- 2** Beech slat seat and bed bases with sprung hinged tops and ample storage
- 3** Useful front chest with soft-close drawer, concealed drawer and slide-out extending top
- 4** Positive overhead locker catches for secure storage on the move
- 5** Upper front corner opening lockers for extra storage
- 6** Contoured cushioning and sumptuous fabrics for increased comfort
- 7** Panoramic front sunroof with integrated curved blind, recessed lighting and speakers
- 8** Luxury full-width curtains accenting the front centre windows





1

Beige Weft kitchen worktop with foldaway extension and stainless steel sink

2

Tall slimline dual-hinged Dometic (Series 10) 133 litre fridge with removable freezer compartment

3

Ventilated Dometic flatbed microwave oven with digital controls

4

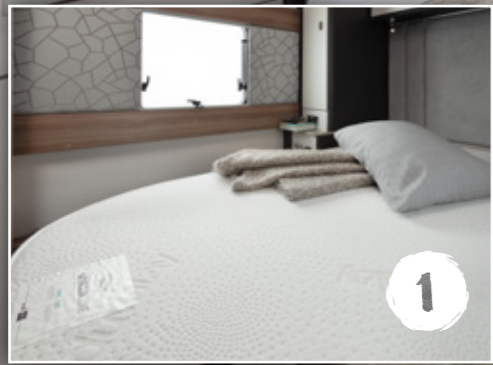
Thetford oven and grill with 3-burner hob, electric hot plate and glass lid gas cut-out feature

5

Domestic style kitchen with soft-close drawers and doors

6

Adjustable under locker LED spotlights with USB points



1 Exclusive Duvalay Duvalite Apollo Luxe mattress with Freshtec for a great night's sleep

2 LED lighting and sumptuous full-height, deep padded headboard*

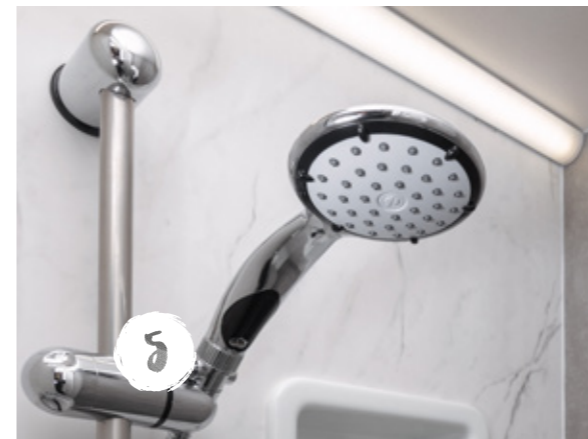
3 Fixed beds with aluminium bed frames to maximise strength and storage space

4 Contemporary fully-fitted washroom with stylish vanity unit

5 Ecocamel Jetstorm shower head for a powerful shower that uses less water

6 Onboard fresh water tank for added convenience

*Model specific



Love
Style



- 1** Fully moulded sweeping front GRP panel with triple flush fitting opening windows
- 2** External service doors and exterior access battery box with mains electric inlet^^
- 3** Surface mounted impact resistant skirt system
- 4** Ample external LED lighting including high-level marker for better visibility
- 5** Fixing bars for optional Thule rear mounted cycle rack^
- 6** Easy-access gas locker door with three-point locking plus BBQ point and 230V mains socket
- 7** Hail-resistant GRP roof with 100W roof-mounted solar panel
- 8** AL-KO stabiliser and shock absorbers for smoother, safer towing

^Elite G2
^^Battery not included

SMART CONSTRUCTION



SMART is the basis of our intelligent construction system, used across our entire touring caravan range. Strong, Modern, Aerodynamic, Resilient and Tested, you can be assured your Swift caravan is a high quality engineered product.



STRONG

The Strong timberless body frame uses PURE, a tough, hard polyurethane based product that is totally impervious to water and has been proven through use.



MODERN

The SMART construction system uses Modern materials, and has been developed to ensure the exterior profiles maintain the Modern, desirable looks our caravans are renowned for.



AERODYNAMIC

We continue to lead the way in Aerodynamics, using Computational Fluid Dynamics to help shape the bodyshell for better fuel consumption and safer towing.



RESILIENT

All fixings are made into the PURE material to a pre-defined depth. PURE is totally impervious to water and has no veins. This means there is no passage for water from the outer skin, making the caravan highly Resilient against moisture.



TESTED

Extensive safety Testing at the Millbrook track, plus cold chamber Testing down to minus 15°C and beyond, puts prototypes through conditions most products will never have to experience in a lifetime; all part of the Swift ethos to deliver the best products to you.



HAIL RESISTANT GRP ROOF

Woven GRP outer surface provides greater durability from the elements.



GRP SIDEWALLS

Balanced panel side walls with GRP outer and inner skins. GRP is more impact resistant than aluminium and can be easily repaired, ensuring long lasting good looks and helping protect your investment for the future.



FLOOR CONSTRUCTION

'Sandwich' floor construction with ply upper, high rigidity Styrofoam core and GRP outer skin to provide greater durability from the elements.



'SMART' GRP sidewall during the production process.

FEATURES

EXTERIOR

- European Whole Vehicle Type Approval ensures compliance with strict weight, dimension and safety regulations
- AL-KO galvanised steel chassis with Euro-axle
- EN1645 Grade 3 classification for heating and thermal insulation confirmed by cold chamber testing
- SMART construction with GRP body panels:
 - Strong, moisture proof 'PURE' polyurethane timber-less framed bodyshell with polystyrene insulation core (25mm in sidewalls, 32mm in roof)
 - Robust balanced panel side walls with GRP outer and inner skin
 - 44mm 'sandwich' floor construction with GRP outer skin, ply upper and high rigidity Ravatherm core
 - Hail resistant exterior GRP roof, fully bonded for extra strength and flatness
 - Sweeping front panel in GRP with triple flush fitting opening windows and exclusive LED front marker lights
- Full height GRP rear panel
- Streamlined aerodynamic profile
- Stylish exterior graphics scheme
- Exclusive LED rear light clusters, LED high level marker and brake light which provide better visibility in poor weather
- LED side marker running lights
- LED awning light with key fob control
- Surface mounted impact resistant skirt system
- Edge alloy wheels
- Steel spare wheel on underslung carrier
- High tyre rating - a load margin is included in the tyre specifications
- High quality jockey wheel
- 13-pin Jaeger 12V car connector
- AL-KO Euro overrun device with two-way assisted handbrake
- AL-KO side-mounted jacking point and jack
- AL-KO carabiner breakaway cable
- Shock absorbers for a smoother towing experience
- Step-on hitch cover for easy cleaning of front windows
- Heavy duty corner steadies
- Rain Guards
- Chrome effect two part grab handles to front and rear
- 100W roof mounted solar panel
- 230V mains socket
- Truma mains water line
- Aerial point in battery box for portable satellite dish connection
- BBQ point and connector
- Exterior access battery box with mains electric inlet (battery not included)
- External service doors (access under nearside front bed and fixed beds)
- Easy access carbon effect gas locker door with single lever three point locking
- Bulkhead mounted regulator suitable for use with either propane or butane bottles
- Fully double-glazed opening windows
- Screen printed windows with graphite grey tint
- Semi-recessed body colour awning rail on both sides
- Fixing bars for optional Thule rear mounted cycle rack (Elite G2)
- Wide domestic-style flush fitting one piece exterior door with magnetic stay, interior moulded liner, and window with blind and bin
- Entrance step

LIVING, RELAXING & SLEEPING

- 1.95m (6'5") headroom
- Zinc soft furnishing scheme
- Complementary Aralie Sen, Toro Tela, and Grau woodgrain with Pearl Weft accents
- High Gloss Cream upper locker doors with Pearl Weft colour panel and Luna Champagne inlay feature strip
- French Oak effect, high impact, scratch resistant floor lino
- Larger retained embroidered entrance mat
- Panoramic front sunroof incorporating fully integrated curved blind system, recessed lighting and speakers
- Luxury full width curtains on front centre windows complemented by fabric covered wall pads
- Twin curtain track for improved hanging and ease of use
- Sectioned removable carpets for flexibility
- Four scatter cushions and two bolsters
- Contoured cushioning and sumptuous fabrics for increased comfort
- Seat and backrest ventilation boards
- Beech slat seat and bed bases for extra comfort and sprung hinged tops for easy access
- Bed make-up system with slats retained on track
- Exclusive Duvalay Duvalite Apollo Luxe mattress containing Freshtec – a market leading high spec foam offering maximum airflow for a cool, comfortable good night's sleep (fixed beds only)
- Fixed beds with aluminium bed frames to maximise strength and storage space (model specific)
- Sumptuous full height, deep padded headboard to fixed beds
- Midi-Heki rooflight with flyscreen and adjustable concertina blind in lounge
- Midi-Heki rooflight with flyscreen and adjustable concertina blind in bedroom
- Door flyscreen with easy concertina action
- Pleated blinds and flyscreens to all windows

COOKING & EATING

- Thetford thermostatic oven and grill with three-burner gas hob and one electric hot plate, all with electronic ignition. Hob features a glass lid with auto gas shut-off functionality
- Ventilated Dometic flatbed microwave oven with digital controls
- Tall slimline dual hinged Dometic series 10 133 litre electronic ignition fridge incorporating 12 litre removable freezer compartment
- Omnivent three-speed, two-way roof fan in kitchen area
- Domestic style kitchen with soft close drawers and doors with positive catches for secure storage
- Beige Weft laminate kitchen worktop and stainless steel sink
- Foldaway kitchen worktop extension
- Removable drainer and food grade nylon chopping board nestle together for easy storage in dedicated location
- Kitchen acrylic splashback
- Chrome effect swivel spout kitchen tap
- Two pull-out wire baskets in kitchen cupboard
- Cutlery drawers on smooth-action steel runners (model specific)
- Chrome finish crockery rack
- Freestanding table

WASHING

- Dedicated contemporary washroom with enhanced lighting and additional storage
- Stylish shower console with Crema Bianca marble-effect wallboard and concrete-effect sidewall, with durable shower tray and bi-fold door retained on track for improved access (480, 565 & 580)
- One piece 'Vellamo' shower cubicle with curved sliding door (560)
- Ecocamel Jetstorm shower head with on/off button for a powerful shower that uses less water
- Chrome effect swivel spout vanity tap
- Dedicated storage shelf in shower area of rear washroom (model specific)
- Thetford toilet with electric flush and 18 litre wheeled waste tank
- Midi-Heki rooflight in washroom (except 580)
- Folding washroom ceiling mounted garment hanging rail (model specific)
- 31mm thick washroom doors with domestic style locks and handles
- Decorative inlay to washroom door (model specific)

STORAGE

- Useful front chest featuring a soft close drawer with concealed drawer inside and convenient slide-out extending top
- Positive overhead locker catches for secure storage on the move with chrome handles
- Upper front corner opening lockers for extra storage
- Seat bases featuring spaceframe construction with full front access and space for larger items
- Soft close drawers and upper lockers throughout for smooth operation
- Lightweight, strong composite furniture construction

UTILITIES

- Exclusive Swift Command control system with large 7" LCD colour touchscreen panel with improved user interface and functionality featuring;
 - o Integrated DAB and FM radio tuning and sound setting control
 - o Simple controls for monitoring and managing:
 - Power
 - Battery selection, battery level meter and power usage
 - 230V AC load limiter (settable between 5 amps & 16 amps)
 - Solar panel charging levels (where fitted)
 - Heating control of Alde heating systems
 - Environment monitoring with internal and external temperature and internal humidity levels
 - Selected lighting control with soft-start dimming
 - Air-conditioning compatible with Dometic and Truma (dealer fit option, model dependent)
 - Refrigeration control and monitoring via CI-bus connection
 - o Swift Command App with Bluetooth connectivity when with the vehicle, to manage and monitor key vehicle functions from your mobile device including power, heating and selected lighting
 - o New Swift Command website, to control and monitor when away from your vehicle (subject to Wi-Fi or GSM network coverage)
 - Includes the useful 'Places of Interest' feature including 'Campsites' from the Camping & Caravanning Club and Swift dealership locations
 - View location history along with system information
 - Add Thatcham category S7 tracking for £95 per year
- Alde radiator central heating and water heating with daily programming with LCD touchscreen control and choice of 1kW, 2kW or 3kW setting
- Digital programmable controller for heating and hot water
- Boiler mounted heating circulation pump with manual override to assist with system air bleeding

- Areas under beds and seats and washroom areas warmed by Alde perimeter radiators
- 30 litre internal fresh water tank with additional external pump for filling or direct feed to taps in all models
- Addition of water tank gauge and filling function on Swift Command power supply unit
- High flow rate onboard pump with chrome effect taps for reliable, high performance water supply
- Onboard semi-rigid fresh water pipes
- Large bore underslung rigid waste pipes
- Isolation taps for gas appliances
- Fully protected mains electric system
- 25 metre mains hook-up cable
- 25 amp switchmode charger/transformer
- Low energy LED lighting throughout interior including:
 - Over locker lighting
 - Adjustable under locker LED spotlights with USB points
 - Illuminated pelmets above side windows
 - Feature lighting to front 'A' pillars
 - Feature strip lighting under kitchen worktop
 - Low level night lights
- A minimum of four 230V sockets throughout (not including cooker and microwave) and two twin USB points
- Chrome effect sockets and switches
- Status 570 directional digital / analogue TV/FM aerial and booster
- TV station with 230V, 12V and aerial sockets (two in all models)

SAFETY & SECURITY

- Convenient one-key high security locks
- VIN CHIPTM identification system concealed within construction to deter theft and aid quick recovery
- CRiS identity number labels on windows and caravan chassis
- Swift Command Tracker, a Thatcham Category S7 approved pro-active tracker pre-installed as part of Swift Command system (subject to annual subscription)
- Passive infra-red alarm system with tilt sensor and key fob operation
- AL-KO ATC trailer stability control
- AKS 3004 stabiliser
- AL-KO secure wheel lock
- Smoke alarm
- Carbon monoxide alarm

CUSTOMER SERVICE

- Manufacturer backed 10 year bodyshell warranty

OPTIONS

Factory Fit

- Alternative fabric scheme (Coyote based on Challenger)
- Alternative ultraleather® scheme (Brisa based on Elegance)

Dealer Fit

- Swift Command Tracker by Sargent annual subscription
- Wrap-around front seating in addition to drawer chest
- Weight plate upgrade (model dependent)
- Roof mounted air conditioning unit (model dependent)
- Yuasa YBX Active Leisure & Marine L36 battery
- Thule rail mounted rear cycle rack (G2 Elite)



FABRIC OPTIONS

Within the Conqueror range there are three fabric options available; the Zinc scheme that comes as standard and the optional Coyote soft furnishing scheme (based on Challenger) or Ultraleather® Brisa soft furnishing scheme (based on Elegance) - see below. Please ask your dealer for full details.

SEATING

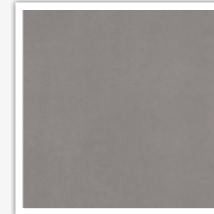
ZINC



COYOTE (OPTIONAL)

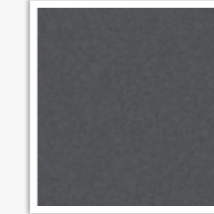


BRISA (OPTIONAL)

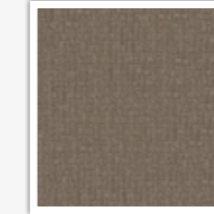


CUSHION

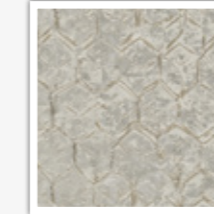
ZINC



COYOTE (OPTIONAL)

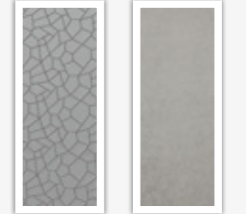


BRISA (OPTIONAL)



CURTAINS/WALLBOARD

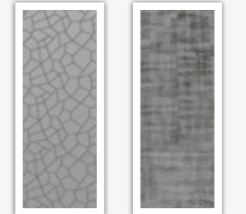
ZINC

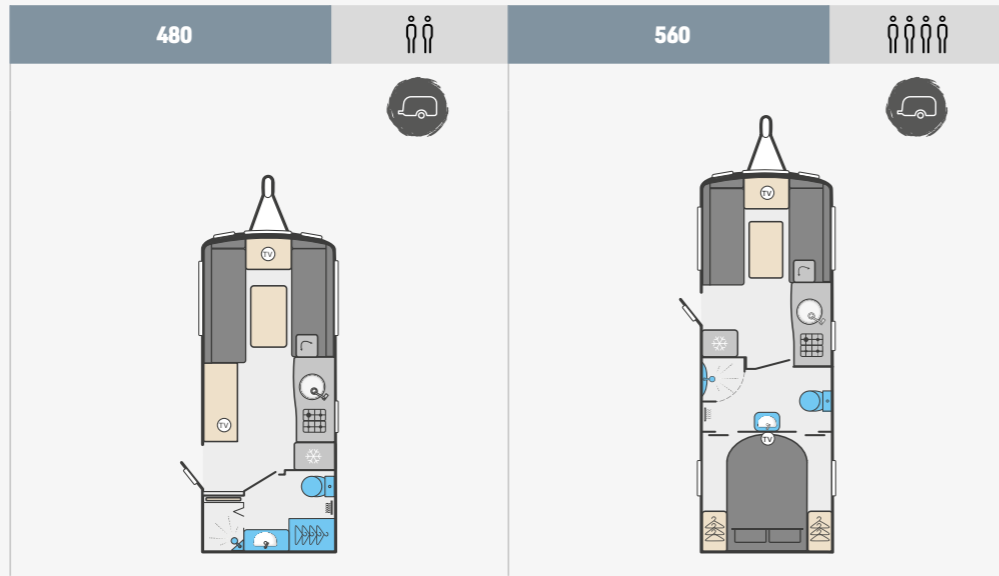


COYOTE (OPTIONAL)

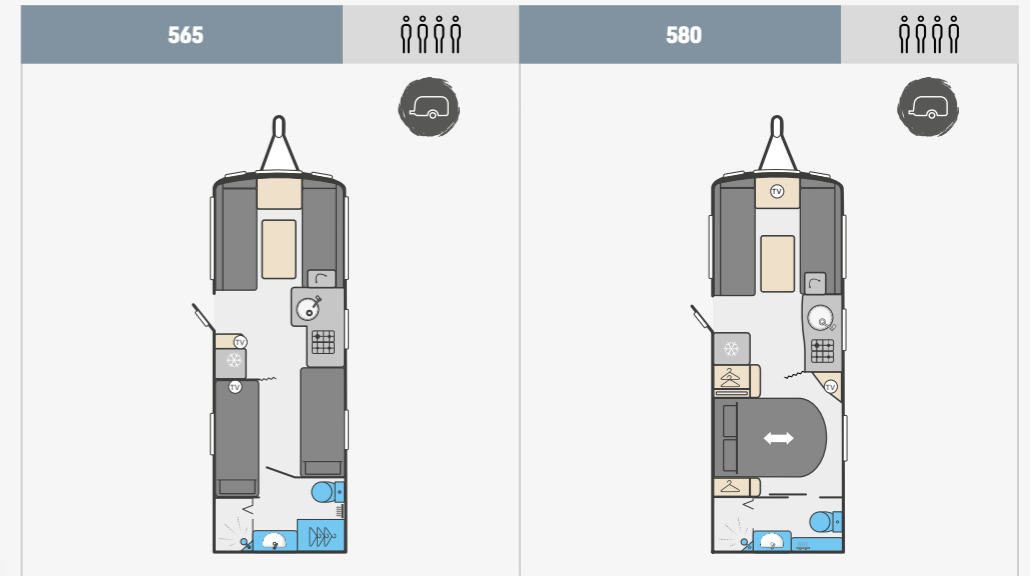


BRISA (OPTIONAL)





| | 480 | 560 |
|---|-----------------------------|-----------------------------|
| Berths | 2 | 4 |
| Number of axles | 1 | 1 |
| Internal length (at bed box height) | 4.98m / 16'4" | 5.93m / 19'5" |
| Overall width* | 2.28m / 7'6" | 2.28m / 7'6" |
| Overall height (inc. TV Aerial)* | 2.59m / 8'6" | 2.61m / 8'7" |
| Maximum internal headroom | 1.95m / 6'5" | 1.95m / 6'5" |
| Overall length* | 6.59m / 21'7" | 7.54m / 24'9" |
| Awning A / A dimension | 9.28m / 30'5" | 10.30m / 33'10" |
| Mass in Running Order (inc. tolerance) | 1351kg / 26.6cwt | 1558kg / 30.7cwt |
| Maximum Technical Permissible Laden Mass | 1477kg / 29.1cwt | 1714kg / 33.7cwt |
| Total user payload | 126kg / 2.5cwt | 156kg / 3.1cwt |
| Personal effects payload | 126kg / 2.5cwt | 156kg / 3.1cwt |
| Factory fit options | 0kg / 0.0cwt | 0kg / 0.0cwt |
| Tyre size | 185 R14C 102 Q | 195 / 70 R15C 104 R |
| Thermal insulation grade | THREE | THREE |
| BED SIZES | | |
| Front double | 200cm x 186cm / 6'7" x 6'1" | 200cm x 158cm / 6'7" x 5'2" |
| or front nearside single and front offside single | 181cm x 67cm / 5'11" x 2'2" | |
| Rear double | | 190cm x 133cm / 6'3" x 4'4" |
| Side single (offside) | | |
| Side single (nearside) | | |



| | 565 | 580 |
|---|-----------------------------|-----------------------------|
| Berths | 4 | 4 |
| Number of axles | 1 | 1 |
| Internal length (at bed box height) | 5.93m / 19'5" | 5.93m / 19'5" |
| Overall width* | 2.28m / 7'6" | 2.28m / 7'6" |
| Overall height (inc. TV Aerial)* | 2.61m / 8'7" | 2.61m / 8'7" |
| Maximum internal headroom | 1.95m / 6'5" | 1.95m / 6'5" |
| Overall length* | 7.54m / 24'9" | 7.54m / 24'9" |
| Awning A / A dimension | 10.30m / 33'10" | 10.30m / 33'10" |
| Mass in Running Order (inc. tolerance) | 1545kg / 30.4cwt | 1530kg / 30.1cwt |
| Maximum Technical Permissible Laden Mass | 1701kg / 33.5cwt | 1686kg / 33.2cwt |
| Total user payload | 156kg / 3.1cwt | 156kg / 3.1cwt |
| Personal effects payload | 156kg / 3.1cwt | 156kg / 3.1cwt |
| Factory fit options | 0kg / 0.0cwt | 0kg / 0.0cwt |
| Tyre size | 195 / 70 R15C 104 R | 195 / 70 R15C 104 R |
| Thermal insulation grade | THREE | THREE |
| BED SIZES | | |
| Front double | 200cm x 168cm / 6'7" x 5'6" | 200cm x 168cm / 6'7" x 5'6" |
| or front nearside single and front offside single | | |
| Rear double | | 182cm x 133cm / 6'0" x 4'4" |
| Side single (offside) | 172cm x 74cm / 5'8" x 2'5" | |
| Side single (nearside) | 190cm x 73cm / 6'3" x 2'4" | |

MASSES: The masses are calculated in accordance with EU regulation 1230 / 2012 and NCC code of practice 304.

The Mass in Running Order (MRO) comprises:

1. The mass of the empty caravan as supplied by Swift including loose items such as the hook-up cable, kit bag, entrance step, manuals etc.
2. 10kg allowance for LPG

The MRO is calculated with the fresh water tank, toilet flush tank and water heater empty. If you travel with water in the fresh water tank, toilet flush tank and the water heater the payload will reduce accordingly.

The personal effects is based on the number of berths and the length of the caravan, and includes an allowance of 20kg for a leisure battery.

The Maximum Technical Laden Mass (MTPLM) is the maximum mass allowed when the caravan is fully laden.

WARNING: Under no circumstances should the MTPLM be exceeded.

BED SIZES: Please note that the front double bed sizes quoted are for seating configurations without chest of drawers. The front double bed width for a layout with a chest of drawers fitted will be reduced by 0.4m (1'4") from that stated.

AWNING SIZES: Due to the varying awning designs and sizes the awning sizes given are approximate only. Specific awning sizes must be confirmed by your dealer or the awning manufacturer prior to purchase.

The dimensions given are approximate due to slight variations in suspension ride heights, loading conditions and tyre pressures. Customers should verify the actual dimensions of their touring caravan before committing to anything that could be impacted by these dimensions.

Please note: Any dealer fit options will reduce the overall payload available to the user of the caravan. If you require additional payload it is possible to

upgrade the MTPLM to the upper limit. Please contact your caravan dealer for more information.

LED ROAD LIGHTS: Certain vehicles may require a secondary fuse box when towing models fitted with LED road lighting.

ENGLAND - NORTH WEST

01. **Bardsea Leisure**, Ulverston
bardsealeisure.co.uk
02. **Lancaster Motorhomes and Caravans**, Carnforth
lancastermotorhomesandcaravans.co.uk
03. **Leisure Sales, Sandbach**
leisuresales.co.uk
04. **Preston Caravans & Motorhomes**, Preston
prestoncm.co.uk
05. **North Western Caravans**, Cheadle Hulme
northwesterncaravans.co.uk
06. **Stewart Longton Caravans Ltd**, Chorley
stewartlongton.co.uk

ENGLAND - NORTH EAST

07. **Kimberley Caravans**, Darlington
kimberleycaravans.co.uk
08. **Teesside Caravans**, Thornaby
teessidecaravans.co.uk
09. **Tyneside Leisure World**, Birtley
leisureworldgroup.com
10. **United British Caravans**, Newcastle upon Tyne
unitedbritishcaravans.co.uk

ENGLAND - YORKSHIRE

11. **Wandahome South Cave Ltd**
caravanbuys.com
12. **Yorkshire Coast Caravans**, Bridlington
yorkshirecoastcaravans.co.uk
13. **Catterick Caravans**, Richmond
leisureworldgroup.com
14. **Ebor Leisure World**, York
leisureworldgroup.com
15. **Sheffield Caravans**, Swallownest
qualitycaravans.com
16. **Yorkshire Caravans Of Bawtry**
yorkshirecaravans.com

ENGLAND - WEST MIDLANDS

17. **Salop Leisure Ltd**, Shrewsbury
salopleisure.co.uk
18. **Spinney**, Silverdale
spinney.co.uk
19. **Broad Lane Leisure**, Alcester
broadlane.co.uk

20. **Broad Lane Leisure**, Kenilworth
broadlane.co.uk

21. **Black Country Caravans**
blackcountrycaravans.co.uk

ENGLAND - EAST MIDLANDS

22. **Glossop Caravans**
glossopcaravans.co.uk
23. **Robinsons Caravans**
robinsonscaravans.co.uk
24. **Ryedale Caravan & Leisure Ltd**, Shepshed
ryedaleleisure.com
25. **Brayford Leisure**, Lincoln
brayford-caravans.co.uk
26. **Couplands Caravans**, Louth
couplandscaravans.co.uk
27. **Grantham Caravans**, Grantham
granthamcaravans.co.uk
28. **Torksey Caravans**, Lincoln
qualitycaravans.com
29. **White Arches Caravans**, Rushden
white-arches.co.uk

30. **Lowdhams Leisure World**, Gunthorpe
lowdhams.com

ENGLAND - SOUTH WEST

31. **Davan Caravans Ltd**, Weston-Super-Mare
davan.co.uk
32. **Tamar Caravans**, Plymouth
tamartowing.co.uk
33. **Forest Of Dean Caravans**, Lydney
forestofdeancaravans.co.uk
34. **Golden Castle Caravans Ltd**, Churchdown
goldencastle.co.uk
35. **Highbridge Caravan Centre**, Highbridge
highbridgecaravans.co.uk
36. **Swindon Caravan Centre**, Wootton Bassett
swindoncaravansgroup.com
37. **Tilshead Caravans**, Salisbury
tilshead-caravans.com

ENGLAND - SOUTH EAST

38. **Pioneer Caravans**, Peterborough
pioneercaravans.co.uk
39. **Homestead Caravan Centre**, Weeley
homesteadcaravans.co.uk
40. **MG Caravans**, Royston
mgcaravans.com
41. **Norwich Caravans**
norwich-caravans.co.uk
42. **Greentrees Caravan Store**
greentrees-caravanstore.co.uk
43. **Bicester Caravans & Leisure**
bicestercaravanandleisure.co.uk
44. **Oxford Caravan Centre**
swindoncaravansgroup.com
45. **Caravan Tech**
caravantech.co.uk
46. **Chichester Caravans**, Nutbourne
chichestercaravans.co.uk
47. **Winchester Caravans**
winchestercaravans.com

SCOTLAND

48. **Dee Valley Caravans**, Drumoak
deevalleycaravans.co.uk
49. **Burnhouse Caravans**, Beith
halleycaravans.co.uk
50. **Dumfries Caravans Centre**
dumfriescaravans.com
51. **Kirkcaldy Caravans**
kirkcaldycaravans.com
52. **S & D Harper Ltd**, Elgin
sdharper.co.uk
53. **Gnr Sutherland Caravan Sales**, Tain
sutherlandcaravans.co.uk
54. **Duncans Caravans**, Wishaw
duncancaravans.co.uk
55. **Perthshire Caravans**, Perth
perthshire-caravans.co.uk
56. **Knowepark Caravans**, Livingston
kpcm.co.uk

WALES

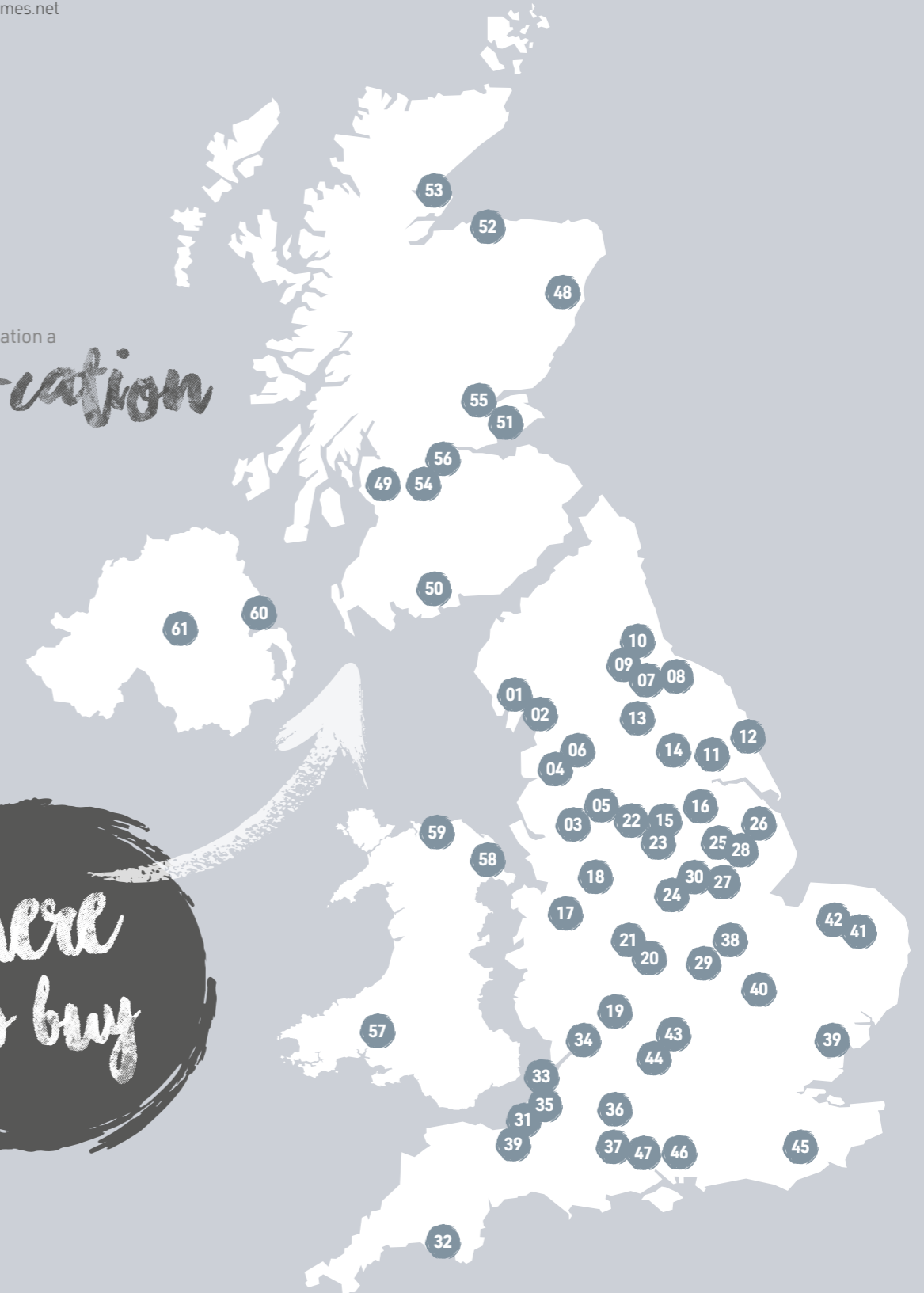
57. **3 As Caravan Co**, Carmarthen
3acaravans.co.uk
58. **Spinney Flintshire**, Deeside
spinney.co.uk
59. **Threeways**, Abergele
threewaysmotorhomes.net

NORTHERN IRELAND

60. **LPC Leisure Ltd**, Bangor
lpccaravans.co.uk
61. **Cookstown Caravans Ltd**
cookstowncaravans.com

Make your staycation a
safe-cation

Where to buy





SWIFT
CREATING SMILES FOR LIFE

VIEW & DOWNLOAD
YOUR COMPLETE RANGE
OF SWIFT BROCHURES HERE
swiftgroup.co.uk/downloads

OR SCAN THE QR CODE



SCAN FOR MORE

swiftgroup.co.uk

DISCLAIMER

This brochure does not constitute an offer by Swift Group Limited (Swift). Swift reserves the right to alter specifications and prices at any time as materials and conditions demand. Distributors and dealers sell Swift products on their own account and not as agents of Swift. Accordingly, they have no authority to bind Swift or to make any representation or undertaking whatsoever on behalf of Swift. All props are for photographic purposes only and are not included in the specification. Models shown may be fitted with optional extras. Issued September 2021.

CARAVANS • MOTORHOMES • HOLIDAY HOMES - MADE IN BRITAIN BY SWIFT

